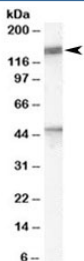


Patched Antibody (R34248)

Catalog No.	Formulation	Size
R34248-100UG	0.5 mg/ml in 1X TBS, pH7.3, with 0.5% BSA (US sourced) and 0.02% sodium azide	100 ug

[Bulk quote request](#)

Availability	1-3 business days
Species Reactivity	Human
Predicted Reactivity	Dog, Pig, Cow
Format	Antigen affinity purified
Host	Goat
Clonality	Polyclonal (goat origin)
Isotype	Goat Ig
Purity	Antigen affinity
Gene ID	5727
Applications	Western Blot : 1-3ug/ml ELISA (peptide) LOD : 1:32000
Limitations	This Patched antibody is available for research use only.



Western blot testing of human brain lysate with Patched antibody at 1ug/ml. Predicted molecular weight ~161/154/144 kDa (isoforms L/M/S) with glycosylated PTCH1 visualized at ~200 kDa.

Description

Additional name(s) for this target protein: HPE7, NBCCS, PTC, PTC1, PTCH1; PTCH

Application Notes

Optimal dilution of the Patched antibody should be determined by the researcher.

Immunogen

Amino acids HPESRHHPPSNPRQQ were used as the immunogen for this Patched antibody. This sequence is common to the L, M and S isoforms of the protein.

Storage

Aliquot and store the Patched antibody at -20oC.