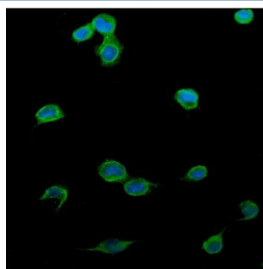


Patched 2 Antibody / PTCH2 (RQ5677)

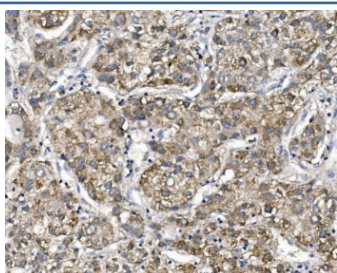
Catalog No.	Formulation	Size
RQ5677	0.5mg/ml if reconstituted with 0.2ml sterile DI water	100 ug

Bulk quote request

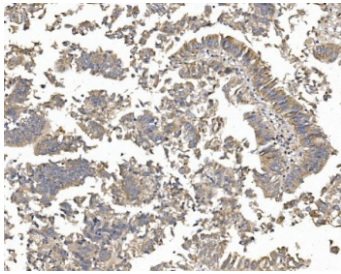
Availability	1-3 business days
Species Reactivity	Human, Mouse, Rat
Format	Antigen affinity purified
Clonality	Polyclonal
Isotype	Rabbit IgG
Purity	Affinity purified
Buffer	Lyophilized from 1X PBS with 2% Trehalose and 0.025% sodium azide
UniProt	Q9Y6C5
Applications	Western Blot : 0.5-1ug/ml Immunohistochemistry : 1-2ug/ml Immunofluorescence : 2-4ug/ml
Limitations	This Patched 2 antibody is available for research use only.



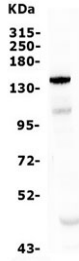
Immunofluorescent staining of FFPE human U-2 OS cells with Patched 2 antibody (green) and DAPI nuclear stain (blue). HIER: steam section in pH6 citrate buffer for 20 min.



IHC staining of FFPE human liver cancer with Patched 2 antibody. HIER: boil tissue sections in pH8 EDTA for 20 min and allow to cool before testing.



IHC staining of FFPE human rectal cancer with Patched 2 antibody. HIER: boil tissue sections in pH8 EDTA for 20 min and allow to cool before testing.



Western blot testing of human ThP-1 lysate with Patched 2 antibody. Expected molecular weight ~130 kDa.

Description

PTCH2 (patched 2), also known as PTC2, encodes a 1,203-amino acid putative transmembrane protein that is highly homologous to the PTCH product. The Patched-hedgehog signaling pathway is involved in establishing segment polarity and the anterior-posterior orientation of a number of developing appendages. The pathway is conserved from fly to vertebrates and has been implicated in a number of human neoplasms and developmental syndromes. Mutations in the human Patched gene are the basis of the nevoid basal cell carcinoma syndrome. With age, homozygous mutant male mice developed skin lesions consisting of alopecia and epidermal hyperplasia, suggesting a role for Ptch2 in adult epidermal homeostasis via Shh signaling.

Application Notes

Optimal dilution of the Patched 2 antibody should be determined by the researcher.

Immunogen

Amino acids FDYAHSQRALFDLHQR from the human protein were used as the immunogen for the Patched 2 antibody.

Storage

After reconstitution, the Patched 2 antibody can be stored for up to one month at 4°C. For long-term, aliquot and store at -20°C. Avoid repeated freezing and thawing.