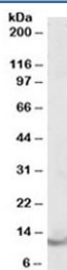


Parvalbumin Antibody (R34146)

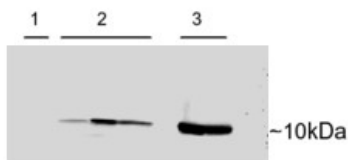
Catalog No.	Formulation	Size
R34146-100UG	0.5 mg/ml in 1X TBS, pH7.3, with 0.5% BSA (US sourced) and 0.02% sodium azide	100 ug

[Bulk quote request](#)

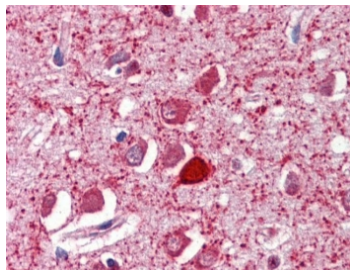
Availability	1-3 business days
Species Reactivity	Human, Rat
Format	Antigen affinity purified
Host	Goat
Clonality	Polyclonal (goat origin)
Isotype	Goat Ig
Purity	Antigen affinity
Gene ID	5816
Localization	Cytoplasmic, nuclear
Applications	Western Blot : 0.1-0.3ug/ml IHC (FFPE) : 2.5-5ug/ml ELISA (peptide) LOD : 1:32000
Limitations	This Parvalbumin antibody is available for research use only.



Western blot testing of human brain lysate with Parvalbumin antibody at 0.1ug/ml.
Predicted molecular weight ~12 kDa.



Western blot of adenovirus-mediated gene transfer in rat heart cells: 1) untransfected, 2) transient transfection with human PVALB, 3) untransfected rat skeletal muscle using Parvalbumin antibody at 0.15ug/ml.



IHC testing of FFPE human brain cortex with Parvalbumin antibody at 2.5ug/ml. Required HIER: steamed antigen retrieval with pH6 citrate buffer; AP-staining.

Description

Additional name(s) for this target protein: PVALB

Application Notes

Optimal dilution of the Parvalbumin antibody should be determined by the researcher.

Immunogen

Amino acids GVDEFSTLVAES were used as the immunogen for this Parvalbumin antibody.

Storage

Aliquot and store the Parvalbumin antibody at -20oC.