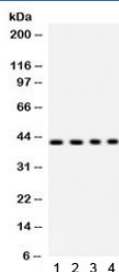


PARVA Antibody / Parvin alpha (R32338)

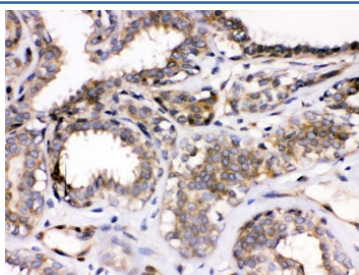
Catalog No.	Formulation	Size
R32338	0.5mg/ml if reconstituted with 0.2ml sterile DI water	100 ug

Bulk quote request

Availability	1-3 business days
Species Reactivity	Human, Mouse, Rat
Format	Antigen affinity purified
Clonality	Polyclonal (rabbit origin)
Isotype	Rabbit IgG
Purity	Antigen affinity
Buffer	Lyophilized from 1X PBS with 2.5% BSA and 0.025% sodium azide
UniProt	Q9NVD7
Localization	Cytoplasmic, membrane
Applications	Western Blot : 0.1-0.5ug/ml IHC (FFPE) : 0.5-1ug/ml
Limitations	This PARVA antibody is available for research use only.



Western blot testing of 1) rat liver, 2) human HeLa, 3) SW620 and 4) mouse HEPA lysate with PARVA antibody. Predicted/observed molecular weight ~42 kDa.



IHC testing of FFPE human breast cancer tissue with PARVA antibody. HIER: Boil the paraffin sections in pH 6, 10mM citrate buffer for 20 minutes and allow to cool prior to staining.

Description

Parvin alpha is a protein that in humans is encoded by the PARVA gene. It is located on 11p15.3. PARVA belongs to the parvin family of actin-binding proteins. Parvins are associated with focal contacts and contain calponin homology domains that bind to actin filaments. The encoded protein is part of the integrin-linked kinase signaling complex and plays a role in cell adhesion, motility and survival.

Application Notes

Optimal dilution of the PARVA antibody should be determined by the researcher.

Immunogen

Amino acids QKLQTVLEKINETLKLPPRSIKWNVDSVHAK of human Parvin alpha were used as the immunogen for the PARVA antibody.

Storage

After reconstitution, the PARVA antibody can be stored for up to one month at 4oC. For long-term, aliquot and store at -20oC. Avoid repeated freezing and thawing.