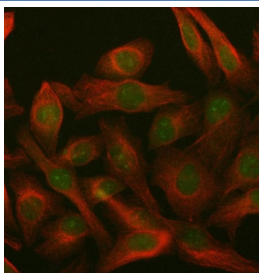


PARP3 Antibody / ARTD3 (RQ8642)

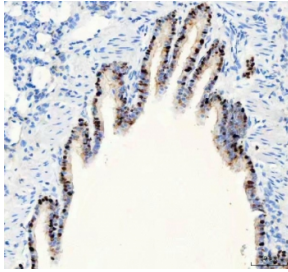
Catalog No.	Formulation	Size
RQ8642	0.5mg/ml if reconstituted with 0.2ml sterile DI water	100 ug

Bulk quote request

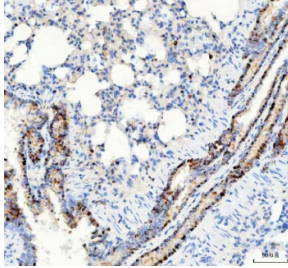
Availability	1-3 days
Species Reactivity	Human, Mouse, Rat, Monkey
Format	Antigen affinity purified
Host	Rabbit
Clonality	Polyclonal (rabbit origin)
Isotype	Rabbit IgG
Purity	Antigen affinity purified
Buffer	Lyophilized from 1X PBS with 2% Trehalose
UniProt	Q9Y6F1
Localization	Nuclear, cytoplasmic
Applications	Western Blot : 0.5-1ug/ml Immunohistochemistry (FFPE) : 2-5ug/ml Immunofluorescence : 5ug/ml ELISA : 0.1-0.5ug/ml
Limitations	This PARP3 antibody is available for research use only.



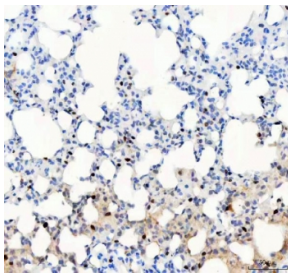
Immunofluorescent staining of FFPE human HeLa cells with PARP3 antibody (green) and Beta Tubulin mAb (red). HIER: steam section in pH6 citrate buffer for 20 min.



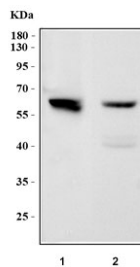
IHC staining of FFPE rat lung tissue with PARP3 antibody. HIER: boil tissue sections in pH8 EDTA for 20 min and allow to cool before testing.



IHC staining of FFPE rat lung tissue with PARP3 antibody. HIER: boil tissue sections in pH8 EDTA for 20 min and allow to cool before testing.



IHC staining of FFPE mouse lung tissue with PARP3 antibody. HIER: boil tissue sections in pH8 EDTA for 20 min and allow to cool before testing.



Western blot testing of 1) monkey COS-7 and 2) mouse kidney tissue lysate with PARP3 antibody. Predicted molecular weight ~60 kDa.

Description

Poly [ADP-ribose] polymerase 3 is an enzyme that in humans is encoded by the PARP3 gene. The protein encoded by this gene belongs to the PARP family. These enzymes modify nuclear proteins by poly-ADP-ribosylation, which is required for DNA repair, regulation of apoptosis, and maintenance of genomic stability. This gene encodes the poly(ADP-ribosyl)transferase 3, which is preferentially localized to the daughter centriole throughout the cell cycle. Alternatively spliced transcript variants encoding different isoforms have been identified.

Application Notes

Optimal dilution of the PARP3 antibody should be determined by the researcher.

Immunogen

An E.coli-derived human recombinant protein (amino acids Q162-Q498) was used as the immunogen for the PARP3 antibody.

Storage

After reconstitution, the PARP3 antibody can be stored for up to one month at 4°C. For long-term, aliquot and store at

-20oC. Avoid repeated freezing and thawing.