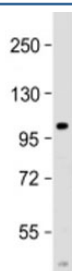


PARP10 Antibody (F53976)

Catalog No.	Formulation	Size
F53976-0.05ML	In 1X PBS, pH 7.4, with 0.09% sodium azide	0.05 ml

Bulk quote request

Availability	1-3 business days
Species Reactivity	Human
Format	Antigen affinity purified
Host	Rabbit
Clonality	Polyclonal (rabbit origin)
Isotype	Rabbit Ig
Purity	Antigen affinity
UniProt	Q53GL7
Applications	Western Blot : 1:1000-2000
Limitations	This PARP10 antibody is available for research use only.



Western blot testing of human spleen lysate with PARP10 antibody at 1:2000. Predicted molecular weight ~110 kDa but can be observed at up to ~150 kDa.

Description

Poly [ADP-ribose] polymerase 10 may play a role in cell proliferation. May be required for the maintenance of cell cycle progression.

Application Notes

Titration of the PARP10 antibody may be required due to differences in protocols and secondary/substrate sensitivity.

Immunogen

A portion of amino acids 565-597 from the human protein was used as the immunogen for the PARP10 antibody.

Storage

Aliquot the PARP10 antibody and store frozen at -20oC or colder. Avoid repeated freeze-thaw cycles.