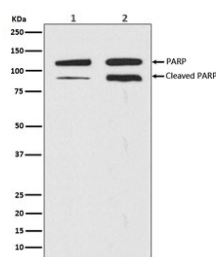


PARP1 Antibody / PARP [clone ABCG-16] (RQ5291)

Catalog No.	Formulation	Size
RQ5291	Antibody in PBS with 0.02% sodium azide, 50% glycerol and 0.4-0.5mg/ml BSA	100 ul

[Bulk quote request](#)

Availability	1-2 weeks
Species Reactivity	Human
Format	Purified
Clonality	Rabbit Monoclonal
Isotype	Rabbit IgG
Clone Name	ABCG-16
Purity	Affinity purified
UniProt	P09874
Applications	Western Blot : 1:500-1:1000
Limitations	This PARP1 antibody is available for research use only.



Western blot testing of 1) human HeLa cell lysate and 2) lysate from staurosporine-treated human HeLa cells with PARP1 antibody. Predicted molecular weight ~116 kDa (full length), ~89 kDa (auto-modification/catalytic domain).

Description

The PARP1 gene encodes a chromatin-associated enzyme, poly(ADP-ribosyl)transferase, which modifies various nuclear proteins by poly(ADP-ribosyl)ation. The modification is dependent on DNA and is involved in the regulation of various important cellular processes such as differentiation, proliferation, and tumor transformation and also in the regulation of the molecular events involved in the recovery of cell from DNA damage. In addition, this enzyme may be the site of mutation in Fanconi anemia, and may participate in the pathophysiology of type I diabetes. [RefSeq]

Application Notes

Optimal dilution of the PARP1 antibody should be determined by the researcher.

Immunogen

A synthetic peptide specific to human PARP1 (auto-modification/catalytic domain) was used as the immunogen for the PARP1 antibody.

Storage

Store the PARP1 antibody at -20oC.