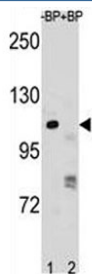


## PARP1 Antibody (F47592)

Catalog No.	Formulation	Size
F47592-0.4ML	In 1X PBS, pH 7.4, with 0.09% sodium azide	0.4 ml
F47592-0.08ML	In 1X PBS, pH 7.4, with 0.09% sodium azide	0.08 ml

[Bulk quote request](#)

<b>Availability</b>	1-3 business days
<b>Species Reactivity</b>	Human
<b>Predicted Reactivity</b>	Mouse
<b>Format</b>	Antigen affinity purified
<b>Host</b>	Rabbit
<b>Clonality</b>	Polyclonal (rabbit origin)
<b>Isotype</b>	Rabbit Ig
<b>Purity</b>	Antigen affinity
<b>UniProt</b>	P09874
<b>Applications</b>	Western Blot : 1:1000
<b>Limitations</b>	This PARP1 antibody is available for research use only.



PARP1 antibody pre-incubated without (lane 1) and with (2) blocking peptide in NCI-H292 lysate

## Description

This gene encodes a chromatin-associated enzyme, poly(ADP-ribose)transferase, which modifies various nuclear proteins by poly(ADP-ribose)ation. It is involved in the base excision repair (BER) pathway, by catalyzing the poly(ADP-ribose)ation of a limited number of acceptor proteins involved in chromatin architecture and in DNA metabolism. [UniProt]

Additional PARP1 pathway and chromatin-associated DNA repair studies may benefit from our PARP1 antibody page

featuring [recombinant rabbit monoclonal clone CFD-16](#) with knockdown-validated target recognition.

## Application Notes

Titration of the PARP1 antibody may be required due to differences in protocols and secondary/substrate sensitivity.

## Immunogen

A portion of amino acids 123-151 from the human protein was used as the immunogen for this PARP1 antibody.

## Storage

Aliquot the PARP1 antibody and store frozen at -20oC or colder. Avoid repeated freeze-thaw cycles.