

## Parkin Antibody / PARK2 (R31720)

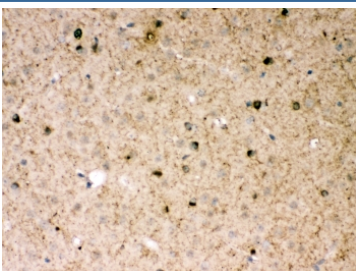
Catalog No.	Formulation	Size
R31720	0.5mg/ml if reconstituted with 0.2ml sterile DI water	100 ug

[Bulk quote request](#)

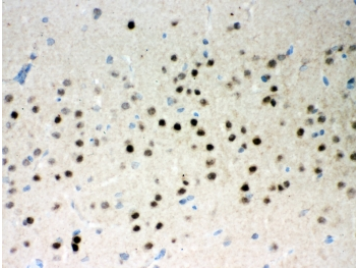
<b>Availability</b>	1-3 business days
<b>Species Reactivity</b>	Human, Mouse, Rat
<b>Format</b>	Antigen affinity purified
<b>Host</b>	Rabbit
<b>Clonality</b>	Polyclonal (rabbit origin)
<b>Isotype</b>	Rabbit IgG
<b>Purity</b>	Antigen affinity
<b>Buffer</b>	Lyophilized from 1X PBS with 2.5% BSA and 0.025% sodium azide
<b>Gene ID</b>	5071
<b>Applications</b>	Western Blot : 0.5-1ug/ml IHC (FFPE) : 0.5-1ug/ml Immunocytochemistry : 0.5-1ug/ml
<b>Limitations</b>	This Parkin antibody is available for research use only.



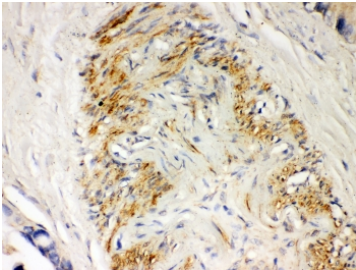
Western blot testing of Parkin antibody and Lane 1: U87; 2: mouse brain lysate. Expected molecular weight: 50-60 kDa with multiple smaller isoforms.



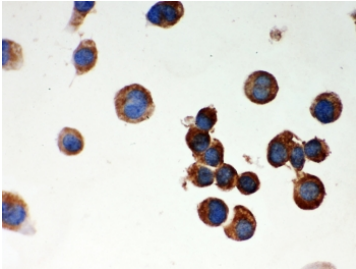
IHC-P: Parkin antibody testing of mouse brain tissue. HIER: steamed with pH6 citrate buffer.



IHC-P: Parkin antibody testing of rat brain tissue. HIER: steamed with pH6 citrate buffer.



IHC-P: Parkin antibody testing of human intestinal cancer tissue. HIER: steamed with pH6 citrate buffer.



ICC testing of Parkin antibody and mouse Neuro-2a cells

## Description

Parkin is a RING domain-containing E3 ubiquitin ligase involved in proteasome-dependent degradation of proteins. It is mapped to 6q26. This gene is important for mitochondrial quality control by lysosome-dependent degradation of damaged mitochondria through autophagy, or mitophagy. Parkin is expressed in neuronal processes and cell bodies of neurons, but not glial cells, in the midbrain, basal ganglia, cerebral cortex, and cerebellum. Parkin associated with actin filaments, suggesting that it is a cytoskeletal-associated protein. Parkin is identified as a transcriptional repressor of p53 independent of its ubiquitin ligase function. It also has been found that parkin was associated physically with mitochondrial DNA (mtDNA) in proliferating as well as in differentiated SH-SY5Y neuroblastoma cells.

## Application Notes

The stated application concentrations are suggested starting amounts. Titration of the Parkin antibody may be required due to differences in protocols and secondary/substrate sensitivity.

## Immunogen

Human partial recombinant protein (AA 23-416) was used as the immunogen for this Parkin antibody.

## Storage

After reconstitution, the Parkin antibody can be stored for up to one month at 4°C. For long-term, aliquot and store at -20°C. Avoid repeated freezing and thawing.

