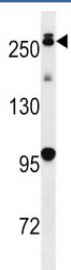


## PARK8 Antibody (F50112)

Catalog No.	Formulation	Size
F50112-0.4ML	In 1X PBS, pH 7.4, with 0.09% sodium azide	0.4 ml
F50112-0.08ML	In 1X PBS, pH 7.4, with 0.09% sodium azide	0.08 ml

[Bulk quote request](#)

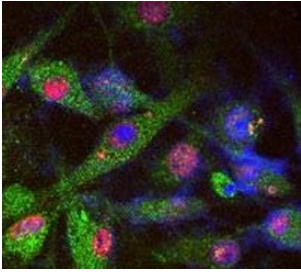
<b>Availability</b>	1-3 business days
<b>Species Reactivity</b>	Human, Mouse
<b>Format</b>	Antigen affinity purified
<b>Host</b>	Rabbit
<b>Clonality</b>	Polyclonal (rabbit origin)
<b>Isotype</b>	Rabbit Ig
<b>Purity</b>	Antigen affinity
<b>UniProt</b>	Q5S007
<b>Applications</b>	Western Blot : 1:1000 Immunofluorescence : 1:10-1:50
<b>Limitations</b>	This PARK8 antibody is available for research use only.



PARK8 antibody western blot analysis in mouse lung tissue lysate.



Western blot: Park8 antibody detecting over-expressed human LRRK2/PARK8 protein.



SY5Y cells stained for endogenous PARK8 (green), phosphorylated Tau (red), and DAPI nuclear staining.

## Description

Parkinson is the second most common neurodegenerative disease after Alzheimers. About 1 percent of people over the age of 65 and 3 percent of people over the age of 75 are affected by the disease. The mutation is the most common cause of Parkinson's disease identified to date. LRRK2/PARK8, a genetic mutation, was recently found linked to about 5 percent of inherited cases of Parkinson's disease. By high-resolution recombination mapping and candidate gene sequencing in 46 families, 6 disease-segregating mutations (5 missense and 1 putative splice site mutation). It may be central to the pathogenesis of several major neurodegenerative disorders associated with parkinsonism. PARK8 belongs to the ROCO protein family and includes a protein kinase domain of the MAPKKK class and several other major functional domains.

## Application Notes

Titration of the PARK8 antibody may be required due to differences in protocols and secondary/substrate sensitivity.

## Immunogen

A portion of amino acids 930-961 from the human protein was used as the immunogen for this PARK8 antibody.

## Storage

Aliquot the PARK8 antibody and store frozen at -20oC or colder. Avoid repeated freeze-thaw cycles.