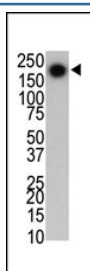


PARK8 Antibody [clone 133AT1218] (F40408)

| Catalog No. | Formulation | Size |
|---------------|--|---------|
| F40408-0.4ML | In 1X PBS, pH 7.4, with 0.09% sodium azide | 0.4 ml |
| F40408-0.08ML | In 1X PBS, pH 7.4, with 0.09% sodium azide | 0.08 ml |

[Bulk quote request](#)

| | |
|---------------------------|---|
| Availability | 1-3 business days |
| Species Reactivity | Human, Mouse |
| Format | Purified |
| Clonality | Monoclonal (mouse origin) |
| Isotype | Mouse IgG1 |
| Clone Name | 133AT1218 |
| Purity | Purified |
| UniProt | Q5S007 |
| Applications | Western Blot : 1:100-1:500 |
| Limitations | This PARK8 antibody is available for research use only. |



The PARK8 antibody used in western blot to detect LRRK2/PARK8 in mouse brain cell lysate

Description

This gene is a member of the leucine-rich repeat kinase family and encodes a protein with an ankryin repeat region, a leucine-rich repeat (LRR) domain, a kinase domain, a DFG-like motif, a RAS domain, a GTPase domain, a MLK-like domain, and a WD40 domain. The protein is present largely in the cytoplasm but also associates with the mitochondrial outer membrane. Mutations in this gene have been associated with Parkinson disease-8.

Application Notes

Titration of the PARK8 antibody may be required due to differences in protocols and secondary/substrate sensitivity.

Immunogen

This PARK8 antibody was raised in mice using purified His-tagged recombinant protein comprised of the C-terminal 261 residues of LRRK2.

Storage

Aliquot the PARK8 antibody and store frozen at -20oC or colder. Avoid repeated freeze-thaw cycles.