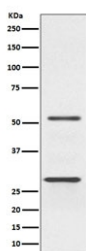


## PARK2 Antibody / Parkin [clone AOCD-16] (RQ4751)

Catalog No.	Formulation	Size
RQ4751	Antibody in PBS with 0.02% sodium azide, 50% glycerol and 0.4-0.5mg/ml BSA	100 ul

[Bulk quote request](#)

Availability	1-2 weeks
Species Reactivity	Human
Format	Purified
Clonality	Rabbit Monoclonal
Isotype	Rabbit IgG
Clone Name	AOCD-16
Purity	Affinity purified
UniProt	O60260
Applications	Western Blot : 1:500-1:2000
Limitations	This PARK2 antibody is available for research use only.



Western blot testing of human Jurkat cell lysate with PARK2 antibody. Expected molecular weight: 50-60 kDa with multiple smaller isoforms (possible ~30 kDa isoform visualized here).

### Description

'E3 ubiquitin-protein ligase parkin,' also called 'Parkinson disease protein 2,' is a component of a multiprotein E3 ubiquitin ligase complex that mediates the targeting of substrate proteins for proteasomal degradation. Mutations in this gene are known to cause Parkinson disease and autosomal recessive juvenile Parkinson disease. [RefSeq]

### Application Notes

Optimal dilution of the PARK2 antibody should be determined by the researcher.

## Immunogen

A synthetic peptide specific to human Parkin / PARK2 was used as the immunogen for the PARK2 antibody.

## Storage

Store the PARK2 antibody at -20oC.