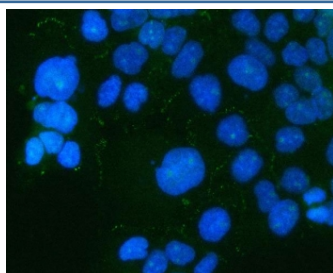


## PARD6B Antibody / Partitioning defective 6 homolog beta (RQ8605)

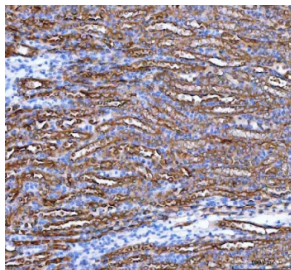
Catalog No.	Formulation	Size
RQ8605	0.5mg/ml if reconstituted with 0.2ml sterile DI water	100 ug

**Bulk quote request**

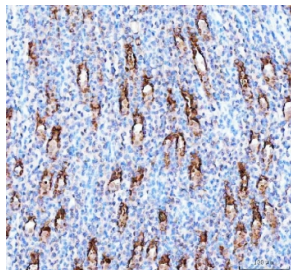
<b>Availability</b>	1-3 days
<b>Species Reactivity</b>	Human, Mouse, Rat
<b>Format</b>	Antigen affinity purified
<b>Clonality</b>	Polyclonal (rabbit origin)
<b>Isotype</b>	Rabbit IgG
<b>Purity</b>	Antigen affinity purified
<b>Buffer</b>	Lyophilized from 1X PBS with 2% Trehalose
<b>UniProt</b>	Q9BYG5
<b>Localization</b>	Cytoplasm, cell membrane, cell junction
<b>Applications</b>	Western Blot : 0.5-1ug/ml Immunohistochemistry (FFPE) : 2-5ug/ml Immunofluorescence : 5ug/ml Flow Cytometry : 1-3ug/million cells ELISA : 0.1-0.5ug/ml
<b>Limitations</b>	This PAR6B antibody is available for research use only.



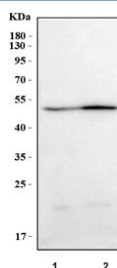
Immunofluorescent staining of FFPE human A431 cells with PAR6B antibody (green) and DAPI nuclear stain (blue). HIER: steam section in pH6 citrate buffer for 20 min.



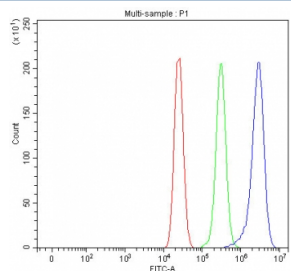
IHC staining of FFPE mouse kidney tissue with PARD6B antibody. HIER: boil tissue sections in pH8 EDTA for 20 min and allow to cool before testing.



IHC staining of FFPE rat kidney tissue with PARD6B antibody. HIER: boil tissue sections in pH8 EDTA for 20 min and allow to cool before testing.



Western blot testing of human 1) HeLa and 2) 293T cell lysate with PARD6B antibody. Predicted molecular weight ~41 kDa.



Flow cytometry testing of fixed and permeabilized human MCF7 cells with PARD6B antibody at 1ug/million cells (blocked with goat sera); Red=cells alone, Green=isotype control, Blue= PARD6B antibody.

## Description

Partitioning defective 6 homolog beta is a protein that in humans is encoded by the PARD6B gene. This gene is a member of the PAR6 family and encodes a protein with a PSD95/Discs-large/ZO1 (PDZ) domain, an OPR domain and a semi-Cdc42/Rac interactive binding (CRIB) domain. This cytoplasmic protein is involved in asymmetrical cell division and cell polarization processes as a member of a multi-protein complex.

## Application Notes

Optimal dilution of the PARD6B antibody should be determined by the researcher.

## Immunogen

An E.coli-derived human recombinant protein (amino acids L89-L362) was used as the immunogen for the PARD6B antibody.

## Storage

After reconstitution, the PARD6B antibody can be stored for up to one month at 4°C. For long-term, aliquot and store at -20°C. Avoid repeated freezing and thawing.

