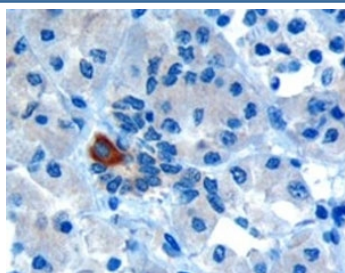


PAR6 Antibody (R34137)

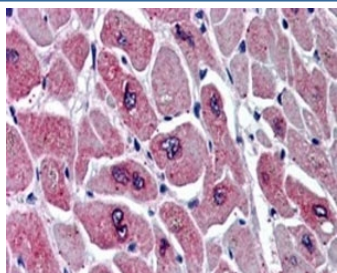
Catalog No.	Formulation	Size
R34137-100UG	0.5 mg/ml in 1X TBS, pH7.3, with 0.5% BSA (US sourced) and 0.02% sodium azide	100 ug

[Bulk quote request](#)

Availability	1-3 business days
Species Reactivity	Human
Format	Antigen affinity purified
Clonality	Polyclonal (goat origin)
Isotype	Goat Ig
Purity	Antigen affinity
Gene ID	50855
Applications	Immunohistochemistry (FFPE) : 10ug/ml ELISA (peptide) LOD : 1:8000
Limitations	This PAR6 antibody is available for research use only.



IHC testing of FFPE human pancreas with PAR6 antibody at 10ug/ml. Microwaved antigen retrieval with Tris/EDTA buffer pH9, HRP-staining. Cytoplasmic staining of intralobular ducts is seen.



IHC staining of FFPE human heart with PAR6 antibody at 5ug/ml. HIER: steamed with pH6 citrate buffer, AP-staining. Speckled staining on myocardial fibers is seen.

Description

Additional name(s) for this target protein: Par-6 partitioning defective 6 homolog alpha; PARD6A

Application Notes

Optimal dilution of the PAR6 antibody should be determined by the researcher.

Immunogen

Amino acids GSRIRGDGSGFSL were used as the immunogen for this PAR6 antibody.

Storage

Aliquot and store the PAR6 antibody at -20oC.