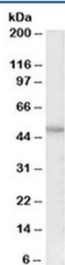


PAR1 Antibody (R36263)

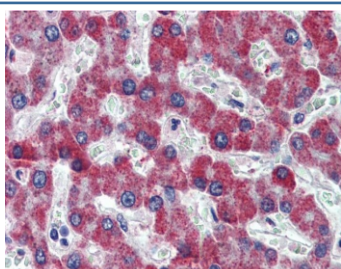
Catalog No.	Formulation	Size
R36263-100UG	0.5 mg/ml in 1X TBS, pH7.3, with 0.5% BSA (US sourced) and 0.02% sodium azide	100 ug

[Bulk quote request](#)

Availability	1-3 business days
Species Reactivity	Human
Format	Antigen affinity purified
Clonality	Polyclonal (goat origin)
Isotype	Goat Ig
Purity	Antigen affinity
Gene ID	2149
Localization	Cytoplasmic
Applications	Western Blot : 0.5-2ug/ml IHC (FFPE) : 2.5ug/ml ELISA (peptide) LOD : 1:32000
Limitations	This PAR1 antibody is available for research use only.



Western blot testing of HeLa lysate with PAR1 antibody at 0.5ug/ml. Predicted molecular weight ~47 kDa.



IHC testing of FFPE human liver tissue with PAR1 antibody at 2.5ug/ml. Required HIER: steamed antigen retrieval with pH6 citrate buffer; AP-staining.

Description

Additional name(s) for this target protein: Protease-activated receptor 1 antibody; thrombin receptor; TR; F2R; coagulation factor II (thrombin) receptor

Application Notes

Optimal dilution of the PAR1 antibody should be determined by the researcher.

Immunogen

Amino acids TRARRPESKATNAT were used as the immunogen for this PAR1 antibody.

Storage

Aliquot and store the PAR1 antibody at -20oC.