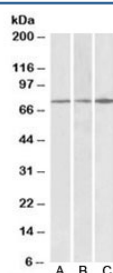


PAPD5 Antibody / TRF4-2 (R34158)

| Catalog No. | Formulation | Size |
|--------------|---|--------|
| R34158-100UG | 0.5 mg/ml in 1X TBS, pH7.3, with 0.5% BSA (US sourced) and 0.02% sodium azide | 100 ug |

[Bulk quote request](#)

| | |
|--------------------|--|
| Availability | 1-3 business days |
| Species Reactivity | Human, Mouse |
| Format | Antigen affinity purified |
| Host | Goat |
| Clonality | Polyclonal (goat origin) |
| Isotype | Goat Ig |
| Purity | Antigen affinity |
| Gene ID | 64282 |
| Applications | Western Blot : 0.3-1ug/ml ELISA (peptide) LOD : 1:64000 |
| Limitations | This PAPD5 antibody is available for research use only. |



Western blot testing of human cerebral cortex [A], human frontal cortex [B] and mouse brain [C] lysates with PAPD5 antibody at 0.3ug/ml. Predicted/observed molecular weight: ~76/74kDa (human/mouse, isoform a).

Description

Additional name(s) for this target protein: PAP associated domain containing 5; TRF4-2

Application Notes

Optimal dilution of the PAPD5 antibody should be determined by the researcher.

Immunogen

Amino acids HALPAEQRDFLP were used as the immunogen for this PAPD5 antibody. This sequence is common to human isoform a (NP_001035374.2) and b (NP_001035375.2) and mouse isoform a (NP_001157969).

Storage

Aliquot and store the PAPD5 antibody at -20oC.