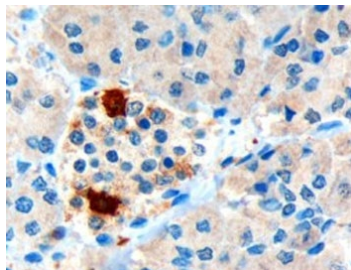


Pancreatic Polypeptide Antibody (R36274)

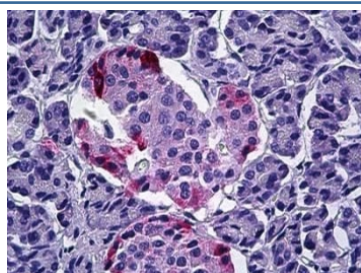
Catalog No.	Formulation	Size
R36274-100UG	0.5 mg/ml in 1X TBS, pH7.3, with 0.5% BSA (US sourced) and 0.02% sodium azide	100 ug

[Bulk quote request](#)

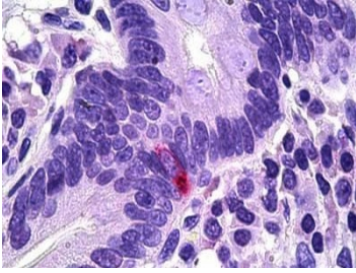
Availability	1-3 business days
Species Reactivity	Human
Predicted Reactivity	Mouse, Rat, Dog
Format	Antigen affinity purified
Clonality	Polyclonal (goat origin)
Isotype	Goat Ig
Purity	Antigen affinity
Gene ID	5539
Localization	Cytoplasmic, secreted
Applications	Immunohistochemistry (FFPE) : 3-6ug/ml ELISA (peptide) LOD : 1:32000
Limitations	This Pancreatic Polypeptide antibody is available for research use only.



IHC testing of FFPE human pancreas with Pancreatic Polypeptide antibody at 3ug/ml. HIER: microwaved with pH9 Tris/EDTA buffer, HRP-staining. Strong cytoplasmic staining of cells at the periphery of the pancreatic islets is seen.



IHC testing of FFPE human pancreas with Pancreatic Polypeptide antibody at 5ug/ml. HIER: steamed antigen retrieval with pH6 citrate buffer; AP-staining.



IHC testing of FFPE human intestine with Pancreatic Polypeptide antibody at 5ug/ml.
HIER: steamed antigen retrieval with pH6 citrate buffer; AP-staining.

Description

Additional name(s) for this target protein: Pancreatic polypeptide Y; PPY

Application Notes

Optimal dilution of the Pancreatic Polypeptide antibody should be determined by the researcher.

Immunogen

Amino acids TRPRYGKRHKEDT were used as the immunogen for this Pancreatic Polypeptide antibody.

Storage

Aliquot and store the Pancreatic Polypeptide antibody at -20oC.