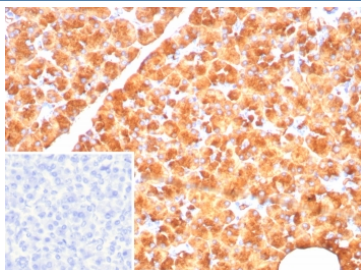


Pancreatic lipase Antibody / PNLIP [clone PNLIP/8916] (V4122)

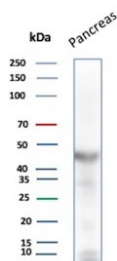
Catalog No.	Formulation	Size
V4122-100UG	0.2 mg/ml in 1X PBS with 0.1 mg/ml BSA (US sourced), 0.05% sodium azide	100 ug
V4122-20UG	0.2 mg/ml in 1X PBS with 0.1 mg/ml BSA (US sourced), 0.05% sodium azide	20 ug
V4122SAF-100UG	1 mg/ml in 1X PBS; BSA free, sodium azide free	100 ug

[Bulk quote request](#)

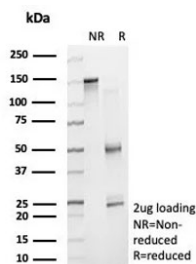
Availability	1-3 business days
Species Reactivity	Human
Format	Purified
Host	Mouse
Clonality	Monoclonal (mouse origin)
Isotype	Mouse IgG1, kappa
Clone Name	PNLIP/8916
Purity	Protein A/G affinity
UniProt	P16233
Localization	Secreted
Applications	Western Blot : 2-4ug/ml Immunohistochemistry (FFPE) : 1-2ug/ml for 30 minutes at RT
Limitations	This Pancreatic lipase antibody is available for research use only.



IHC staining of FFPE human pancreas tissue with Pancreatic lipase antibody (clone PNLIP/8916). Inset: PBS used in place of primary Ab (secondary Ab negative control).
HIER: boil tissue sections in pH 9 10mM Tris with 1mM EDTA for 20 min and allow to cool before testing.



Western blot testing of human pancreas tissue lysate with Pancreatic lipase antibody (clone PNLIP/8916). Predicted molecular weight ~51 kDa.



SDS-PAGE analysis of purified, BSA-free Pancreatic lipase antibody (clone PNLIP/8916) as confirmation of integrity and purity.

Description

The lipase gene family belongs to one of the most robust genetic superfamilies found in living organisms, which includes esterases and thioesterases. Members of the AB hydrolase subfamily include hepatic lipase (HL), endothelial lipase (EL), lipoprotein lipase (LPL), Pancreatic Lipase (PL), gastric lipase (GL) and LCAT. These family members play a crucial role in the metabolism of lipids. Pancreatic Lipase, also designated pancreatic triacylglycerol acyl hydrolase, is important for dietary fat absorption as it hydrolyses triglycerides into diglycerides, monoglycerides and free fatty acids.

Application Notes

Optimal dilution of the Pancreatic lipase antibody should be determined by the researcher.

Immunogen

A recombinant partial protein (within amino acids 1-200) from the human protein was used as the immunogen for the Pancreatic lipase antibody.

Storage

Aliquot the Pancreatic lipase antibody and store frozen at -20°C or colder. Avoid repeated freeze-thaw cycles.