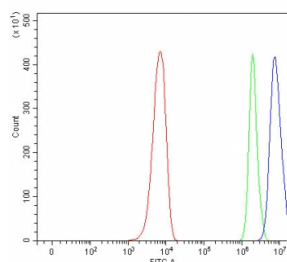


## PAN2 Antibody / USP52 (RQ8005)

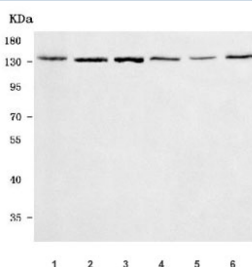
Catalog No.	Formulation	Size
RQ8005	0.5mg/ml if reconstituted with 0.2ml sterile DI water	100 ug

**Bulk quote request**

<b>Availability</b>	1-3 business days
<b>Species Reactivity</b>	Human, Mouse, Rat
<b>Format</b>	Antigen affinity purified
<b>Clonality</b>	Polyclonal (rabbit origin)
<b>Isotype</b>	Rabbit IgG
<b>Purity</b>	Antigen affinity purified
<b>Buffer</b>	Lyophilized from 1X PBS with 2% Trehalose
<b>UniProt</b>	Q504Q3
<b>Applications</b>	Western Blot : 0.5-1ug/ml Flow Cytometry : 1-3ug/million cells Direct ELISA : 0.1-0.5ug/ml
<b>Limitations</b>	This PAN2 antibody is available for research use only.



Flow cytometry testing of fixed and permeabilized human PC-3 cells with PAN2 antibody at 1ug/million cells (blocked with goat sera); Red=cells alone, Green=isotype control, Blue= PAN2 antibody.



Western blot testing of 1) human HepG2, 2) human HEL, 3) human Daudi, 4) rat PC-12, 5) mouse thymus and 6) mouse NIH 3T3 cell lysate with PAN2 antibody. Predicted molecular weight ~135 kDa.

## Description

PAB-dependent poly(A)-specific ribonuclease subunit 2, also called Inactive ubiquitin carboxyl-terminal hydrolase 52 (USP52), is an enzyme that in humans is encoded by the PAN2 gene. This gene encodes a deadenylase that functions as the catalytic subunit of the polyadenylate binding protein dependent poly(A) nuclease complex. The encoded protein is a magnesium dependent 3' to 5' exoribonuclease that is involved in the degradation of cytoplasmic mRNAs. Alternate splicing results in multiple transcript variants.

## Application Notes

Optimal dilution of the PAN2 antibody should be determined by the researcher.

## Immunogen

E. coli-derived recombinant human protein (amino acids M1-L356) was used as the immunogen for the PAN2 antibody.

## Storage

After reconstitution, the PAN2 antibody can be stored for up to one month at 4°C. For long-term, aliquot and store at -20°C. Avoid repeated freezing and thawing.