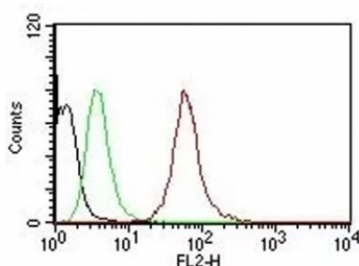


Pan Cytokeratin Antibody PE Conjugate [clone SPM115/SPM116] (V8774PE)

Catalog No.	Formulation	Size
V8774PE-100T	0.2 mg/ml in 1X PBS with 0.1 mg/ml BSA (US sourced), 0.05% sodium azide	100 Tests

[Bulk quote request](#)

Availability	1-3 business days
Species Reactivity	Human
Format	PE Conjugate
Host	Mouse
Clonality	Monoclonal (mouse origin)
Isotype	Mouse IgG1, kappa
Clone Name	SPM115/SPM116
Purity	Protein A/G affinity
UniProt	Q7Z794, Q01546
Applications	Flow Cytometry : 5ul per test per one million cells or 5ul per 100ul of whole blood Immunofluorescence : 1:50-1:100
Limitations	This PE-conjugated Pan Cytokeratin antibody is available for research use only.



Flow Cytometric analysis of human Pan-Cytokeratins on HeLa cells. Black: cells alone; Green: Isotype Control; Red: Pan Cytokeratin Antibody PE Conjugate (clone SPM115/SPM116).

Description

Twenty human keratins are resolved with two-dimensional gel electrophoresis into acidic (pI 6.0) subfamilies. This antibody cocktail recognizes acidic (Type I or LMW) and basic (Type II or HMW) cytokeratins, which include CK1, CK3, CK4, CK5, CK6, CK8, CK10, CK14, CK15, CK16, and CK19. Many studies have shown the usefulness of keratins as markers in cancer research and tumor diagnosis. This MAb is a broad spectrum anti pan-cytokeratin antibody cocktail, which differentiates epithelial tumors from non-epithelial tumors e.g. squamous vs. adenocarcinoma of the lung, liver

carcinoma, breast cancer, and esophageal cancer. It has been used to characterize the source of various neoplasms and to study the distribution of cytokeratin containing cells in epithelia during normal development and during the development of epithelial neoplasms. This antibody stains cytokeratins present in normal and abnormal human tissues and has shown high sensitivity in the recognition of epithelial cells and carcinomas.

Application Notes

Optimal dilution of the Pan Cytokeratin Antibody PE Conjugate should be determined by the researcher.

Immunogen

Human epidermal keratin was used as the immunogen for the PE-conjugated Pan Cytokeratin antibody.

Storage

Store the Pan Cytokeratin Antibody PE Conjugate in the dark at 2-8°C (do not freeze; conjugate is light sensitive).