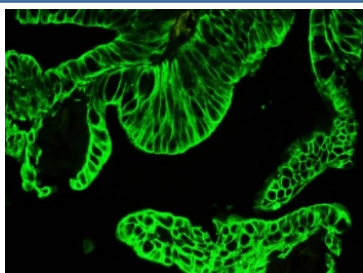


Pan Cytokeratin Antibody [clone PC-26] (R30072)

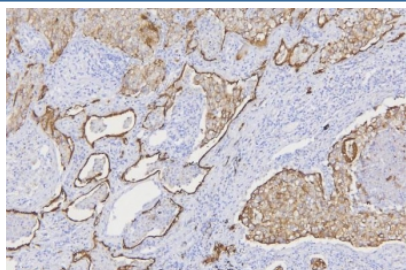
Catalog No.	Formulation	Size
R30072	0.5mg/ml with 1% BSA and 0.01% sodium azide if reconstituted with 0.2ml sterile 1XPBS	100 ug

[Bulk quote request](#)

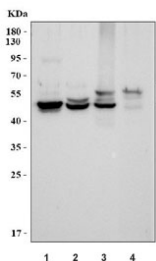
Availability	Discontinued
Species Reactivity	Human, Mouse
Format	Ascites
Clonality	Monoclonal (mouse origin)
Isotype	Mouse IgG1
Clone Name	PC-26
Purity	Ascites
Applications	Western Blot : 0.5-1ug/ml Immunohistochemistry (FFPE) : 1-2ug/ml Immunofluorescence : 1-2ug/ml
Limitations	This pan Cytokeratin antibody is available for research use only.



Immunofluorescent staining of FFPE human intestinal cancer with pan Cytokeratin antibody. HIER: steam section in pH8 EDTA buffer for 20 min.



IHC staining of FFPE human lung cancer tissue with pan Cytokeratin antibody. HIER: boil tissue sections in pH8 EDTA for 20 min and allow to cool before testing.



Western blot testing of 1) human NCL-H460, 2) human Hela, 3) human A431 and 4) mouse skin tissue lysate with pan Cytokeratin antibody.

Description

Cytokeratins are specific markers of epithelial cell differentiation and cytokeratin antibodies have been widely used as tools in tumor identification and classification. This pan Cytokeratin antibody is a broadly reactive reagent which recognizes epitopes present in most human epithelial tissues.

Application Notes

The stated application concentrations are suggested starting amounts. Titration of the pan Cytokeratin antibody may be required due to differences in protocols and secondary/substrate sensitivity.

Immunogen

Cytokeratin from human epidermis was used as the immunogen for this pan Cytokeratin antibody.

Storage

After reconstitution, the pan Cytokeratin antibody can be stored for up to one month at 4oC. For long-term, aliquot and store at -20oC. Avoid repeated freezing and thawing.