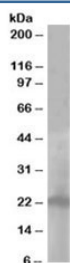


## PALLID Antibody (R33957)

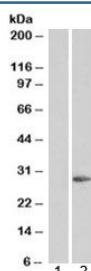
Catalog No.	Formulation	Size
R33957-100UG	0.5 mg/ml in 1X TBS, pH7.3, with 0.5% BSA (US sourced) and 0.02% sodium azide	100 ug

[Bulk quote request](#)

Availability	1-3 business days
Species Reactivity	Human
Predicted Reactivity	Cow, Mouse, Pig, Rat
Format	Antigen affinity purified
Host	Goat
Clonality	Polyclonal (goat origin)
Isotype	Goat Ig
Purity	Antigen affinity
Gene ID	26258
Applications	Western Blot : 1-3ug/ml ELISA (peptide) LOD : 1:32000
Limitations	This PALLID antibody is available for research use only.



Western blot testing of A431 lysate with PALLID antibody at 1 ug/ml. Predicted molecular weight: ~20kDa.



Western blot of HEK293 lysate overexpressing PALLID probed with PALLID antibody (mock transfection in lane 1). Predicted molecular weight: ~20kDa.

## Description

Additional name(s) for this target protein: PLDN; PA; Pallidin (Note: Palladin is a different protein)

## Application Notes

Optimal dilution of the PALLID antibody should be determined by the researcher.

## Immunogen

Amino acids EREKQLTARPAKRM were used as the immunogen for this PALLID antibody.

## Storage

Aliquot and store the PALLID antibody at -20oC.