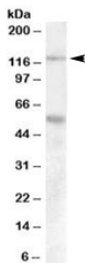


Palladin Antibody (R35569)

Catalog No.	Formulation	Size
R35569-100UG	0.5 mg/ml in 1X TBS, pH7.3, with 0.5% BSA (US sourced) and 0.02% sodium azide	100 ug

[Bulk quote request](#)

Availability	1-3 business days
Species Reactivity	Human
Predicted Reactivity	Mouse, Rat, Dog
Format	Antigen affinity purified
Host	Goat
Clonality	Polyclonal (goat origin)
Isotype	Goat Ig
Purity	Antigen affinity
Gene ID	23022
Applications	Western Blot : 0.1-0.3ug/ml ELISA (peptide) LOD : 1:2000
Limitations	This Palladin antibody is available for research use only.



Western blot testing of human umbilical cord lysate with Palladin antibody at 0.1ug/ml. This protein has multiple isoforms from 65-200 kDa with doublets often observed due to distinct isoforms and phosphorylation states. Both observed bands are blocked by addition of immunizing peptide.

Description

Additional name(s) for this target protein: PALLD

Application Notes

Optimal dilution of the Palladin antibody should be determined by the researcher.

Immunogen

Amino acids RDSGDENEPIQER were used as the immunogen for this Palladin antibody.

Storage

Aliquot and store the Palladin antibody at -20oC.