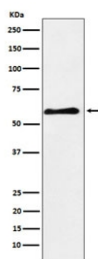


## PAK3 Antibody [clone ADFC-16] (RQ4788)

Catalog No.	Formulation	Size
RQ4788	Antibody in PBS with 0.02% sodium azide, 50% glycerol and 0.4-0.5mg/ml BSA	100 ul

[Bulk quote request](#)

Availability	1-2 weeks
Species Reactivity	Human, Mouse, Rat
Format	Purified
Clonality	Rabbit Monoclonal
Isotype	Rabbit IgG
Clone Name	ADFC-16
Purity	Affinity purified
UniProt	O75914
Applications	Western Blot : 1:1000-1:5000
Limitations	This PAK3 antibody is available for research use only.



Western blot testing of human fetal brain lysate with PAK3 antibody. Predicted molecular weight ~62 kDa.

### Description

PAK proteins are critical effectors that link Rho GTPases to cytoskeleton reorganization and nuclear signaling. PAK proteins serve as targets for the small GTP binding proteins Cdc42 and RAC and have been implicated in a wide range of biological activities. PAK3 forms an activated complex with GTP-bound RAS-like (P21), CDC2 and RAC1 proteins which then catalyzes a variety of targets.

### Application Notes

Optimal dilution of the PAK3 antibody should be determined by the researcher.

## Immunogen

A synthetic peptide specific to human PAK3 was used as the immunogen for the PAK3 antibody.

## Storage

Store the PAK3 antibody at -20oC.