

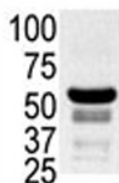
PAK2 Antibody (F50891)

Catalog No.	Formulation	Size
F50891-0.4ML	In 1X PBS, pH 7.4, with 0.09% sodium azide	0.4 ml
F50891-0.08ML	In 1X PBS, pH 7.4, with 0.09% sodium azide	0.08 ml

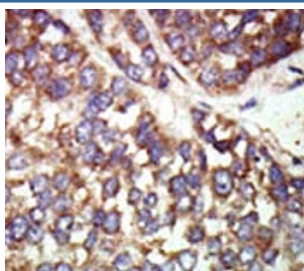
Bulk quote request

Availability	1-3 business days
Species Reactivity	Human
Format	Purified
Clonality	Polyclonal (rabbit origin)
Isotype	Rabbit Ig
Purity	Purified
UniProt	Q13177
Applications	Western Blot : 1:1000 IHC (Paraffin) : 1:50-1:100
Limitations	This PAK2 antibody is available for research use only.

Western blot testing of ovary lysate with PAK2 antibody.



IHC analysis of FFPE human hepatocarcinoma tissue stained with the PAK2 antibody



Description

PAK2, a member of the STE20 subfamily of Ser/Thr protein kinases, acts on a variety of targets. It phosphorylates ribosomal protein S6, histone H4 and myelin basic protein. PAK2 interacts tightly with GTP-bound but not GDP-bound CDC42/p21 and RAC1. Expression is ubiquitous, with higher levels seen in skeletal muscle, ovary, thymus and spleen. PAK2 is autophosphorylated when activated by CDC42/p21. The protein structure contains 1 CRIB domain.

Application Notes

Titration of the PAK2 antibody may be required due to differences in protocols and secondary/substrate sensitivity.

Immunogen

A portion of amino acids 192-222 from the human protein was used as the immunogen for this PAK2 antibody.

Storage

Aliquot the PAK2 antibody and store frozen at -20oC or colder. Avoid repeated freeze-thaw cycles.