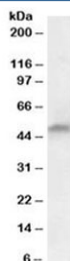


PAH Antibody (R34001)

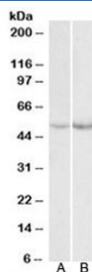
| Catalog No. | Formulation | Size |
|--------------|---|--------|
| R34001-100UG | 0.5 mg/ml in 1X TBS, pH7.3, with 0.5% BSA (US sourced) and 0.02% sodium azide | 100 ug |

[Bulk quote request](#)

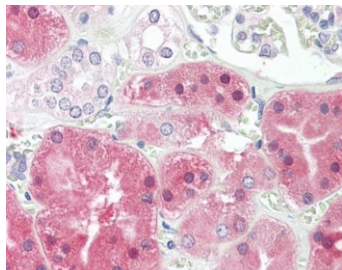
| | |
|----------------------|--|
| Availability | 1-3 business days |
| Species Reactivity | Human, Mouse, Rat |
| Predicted Reactivity | Dog, Cow |
| Format | Antigen affinity purified |
| Clonality | Polyclonal (goat origin) |
| Isotype | Goat Ig |
| Purity | Antigen affinity |
| Gene ID | 5053 |
| Localization | Cytoplasmic |
| Applications | Western Blot : 0.1-0.3ug/ml IHC (FFPE) : 3.75ug/ml ELISA (peptide) LOD : 1:32000 |
| Limitations | This PAH antibody is available for research use only. |



Western blot testing of human liver lysate with PAH antibody at 0.3ug/ml. Predicted molecular weight: ~52 kDa.



Western blot of mouse (A) and rat (B) liver lysate with PAH antibody at 0.1ug/ml.
Predicted molecular weight: ~52 kDa.



IHC testing of FFPE human kidney tissue with PAH antibody at 3.75ug/ml. Required
HIER: steamed antigen retrieval with pH6 citrate buffer; AP-staining.

Description

Additional name(s) for this target protein: Phenylalanine Hydroxylase

Application Notes

Optimal dilution of the PAH antibody should be determined by the researcher.

Immunogen

Amino acids ESRPSRLKKDE were used as the immunogen for this PAH antibody.

Storage

Aliquot and store the PAH antibody at -20oC.