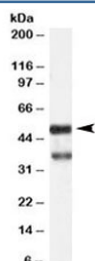


PACSIN1 Antibody (R36076)

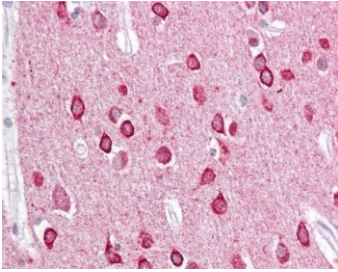
Catalog No.	Formulation	Size
R36076-100UG	0.5 mg/ml in 1X TBS, pH7.3, with 0.5% BSA (US sourced) and 0.02% sodium azide	100 ug

[Bulk quote request](#)

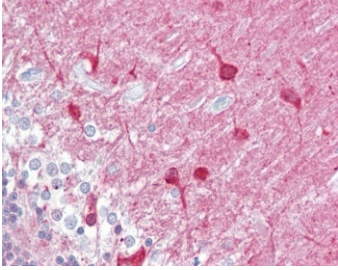
Availability	1-3 business days
Species Reactivity	Human
Predicted Reactivity	Dog, Pig, Cow
Format	Antigen affinity purified
Clonality	Polyclonal (goat origin)
Isotype	Goat Ig
Purity	Antigen affinity
Gene ID	29993
Localization	Cytoplasmic
Applications	Western Blot : 0.03-0.1ug/ml IHC (FFPE) : 2.5ug/ml ELISA (peptide) LOD : 1:32000
Limitations	This PACSIN1 antibody is available for research use only.



Western blot testing of human hippocampus lysate with PACSIN1 antibody at 1ug/ml. Predicted/observed molecular weight: ~50 kDa. Both observed bands are blocked by addition of immunizing peptide.



IHC testing of FFPE human brain (cortex) tissue with PACSIN1 antibody at 2.5ug/ml. Required HIER: steamed antigen retrieval with pH6 citrate buffer; AP-staining.



IHC testing of FFPE human brain (cerebellum) tissue with PACSIN1 antibody at 2.5ug/ml. Required HIER: steamed antigen retrieval with pH6 citrate buffer; AP-staining.

Description

Additional name(s) for this target protein: Protein kinase C and casein kinase substrate in neurons 1

Application Notes

Optimal dilution of the PACSIN1 antibody should be determined by the researcher.

Immunogen

Amino acids SSSYDEASLAPEET were used as the immunogen for this PACSIN1 antibody.

Storage

Aliquot and store the PACSIN1 antibody at -20oC.