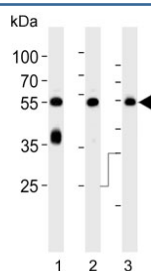


## PACSIN1 Antibody (F54256)

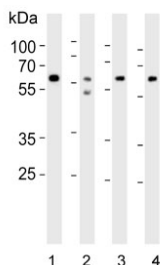
Catalog No.	Formulation	Size
F54256-0.4ML	In 1X PBS, pH 7.4, with 0.09% sodium azide	0.4 ml
F54256-0.08ML	In 1X PBS, pH 7.4, with 0.09% sodium azide	0.08 ml

[Bulk quote request](#)

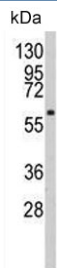
<b>Availability</b>	1-3 business days
<b>Species Reactivity</b>	Human, Mouse, Rat
<b>Format</b>	Purified
<b>Host</b>	Rabbit
<b>Clonality</b>	Polyclonal (rabbit origin)
<b>Isotype</b>	Rabbit Ig
<b>Purity</b>	Antigen affinity purified
<b>UniProt</b>	Q9BY11
<b>Gene ID</b>	29993
<b>Localization</b>	Cytoplasmic
<b>Applications</b>	Western Blot : 1:1000 Immunohistochemistry (FFPE) : 1:50-1:100
<b>Limitations</b>	This PACSIN1 antibody is available for research use only.



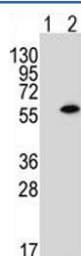
Western blot testing of 1) human brain, 2) mouse brain and 3) rat brain lysate with PACSIN1 antibody. Predicted molecular weight ~50 kDa.



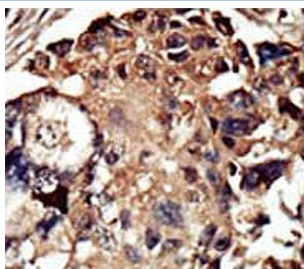
Western blot testing of human 1) Daudi, 2) brain, 3) pancreas and 4) heart lysate with PACSIN1 antibody. Predicted molecular weight ~50 kDa.



Western blot testing of human HL60 cell lysate with PACSIN1 antibody. Predicted molecular weight ~50 kDa.



Western blot testing of lysate from 1) non-transfected or 2) transfected human 293 cells with PACSIN1 antibody. Predicted molecular weight ~50 kDa.



IHC testing of FFPE human breast cancer tissue with PACSIN1 antibody. HIER: steam section in pH6 citrate buffer for 20 min and allow to cool prior to staining.

## Description

Protein kinases are enzymes that transfer a phosphate group from a phosphate donor, generally the  $\gamma$  phosphate of ATP, onto an acceptor amino acid in a substrate protein. By this basic mechanism, protein kinases mediate most of the signal transduction in eukaryotic cells, regulating cellular metabolism, transcription, cell cycle progression, cytoskeletal rearrangement and cell movement, apoptosis, and differentiation. With more than 500 gene products, the protein kinase family is one of the largest families of proteins in eukaryotes. The family has been classified in 8 major groups based on sequence comparison of their tyrosine (PTK) or serine/threonine (STK) kinase catalytic domains. The STE group (homologs of yeast Sterile 7, 11, 20 kinases) consists of 50 kinases related to the mitogen-activated protein kinase (MAPK) cascade families (Ste7/MAP2K, Ste11/MAP3K, and Ste20/MAP4K). MAP kinase cascades, consisting of a MAPK and one or more upstream regulatory kinases (MAPKKs) have been best characterized in the yeast pheromone response pathway. Pheromones bind to Ste cell surface receptors and activate yeast MAPK pathway.

## Application Notes

The stated application concentrations are suggested starting points. Titration of the PACSIN1 antibody may be required due to differences in protocols and secondary/substrate sensitivity.

## Immunogen

A portion of amino acids 8-38 from the human protein were used as the immunogen for the PACSIN1 antibody.

## **Storage**

Aliquot the PACSIN1 antibody and store frozen at -20oC or colder. Avoid repeated freeze-thaw cycles.