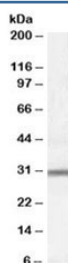


PAC1 Antibody / DSCR2 / PSMG1 (R34521)

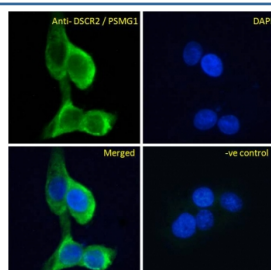
Catalog No.	Formulation	Size
R34521-100UG	0.5 mg/ml in 1X TBS, pH7.3, with 0.5% BSA (US sourced) and 0.02% sodium azide	100 ug

[Bulk quote request](#)

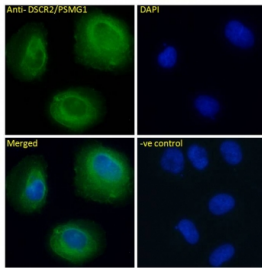
Availability	1-3 business days
Species Reactivity	Human
Predicted Reactivity	Cow, Dog, Mouse, Rabbit, Rat
Format	Antigen affinity purified
Clonality	Polyclonal (goat origin)
Isotype	Goat Ig
Purity	Antigen affinity
Gene ID	8624
Applications	Western Blot : 0.3-1ug/ml IF/ICC : 10ug/ml Flow Cytometry : 10ug/10 ⁶ cells in 0.2ml ELISA (peptide) LOD : 1:64000
Limitations	This PAC1 antibody is available for research use only.



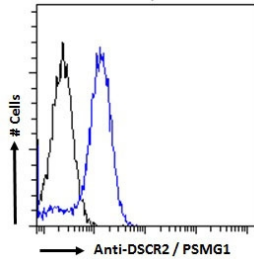
Western blot testing of Jurkat lysate with PAC1 antibody at 0.3ug/ml. Predicted/observed molecular weight: ~30 kDa.



IF/ICC testing of fixed and permeabilized human A431 cells with PAC1 antibody (green) at 10ug/ml and DAPI nuclear stain (blue).



IF/ICC testing of fixed and permeabilized human U-2 OS cells with PAC1 antibody (green) at 10ug/ml and DAPI nuclear stain (blue).



FACS testing of fixed and permeabilized human Jurkat cells with PAC1 antibody (blue) at 10ug/10⁶ cells in 0.2ml and naive goat Ig (black).

Description

Additional name(s) for this target protein: Proteasome assembly chaperone 1, DSCR2, PSMG1

Application Notes

Optimal dilution of the PAC1 antibody should be determined by the researcher.

Immunogen

Amino acids KLMTTNEIQSNIYT were used as the immunogen for this PAC1 antibody.

Storage

Aliquot and store the PAC1 antibody at -20oC.