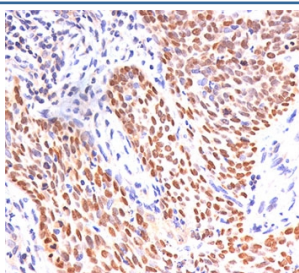


p40 Antibody (V2304)

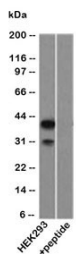
Catalog No.	Formulation	Size
V2304-100UG	0.2 mg/ml in 1X PBS with 0.1 mg/ml BSA (US sourced) and 0.05% sodium azide	100 ug
V2304-20UG	0.2 mg/ml in 1X PBS with 0.1 mg/ml BSA (US sourced) and 0.05% sodium azide	20 ug
V2304SAF-100UG	1 mg/ml in 1X PBS; BSA free, sodium azide free	100 ug
V2304IHC-7ML	Prediluted in 1X PBS with 0.1 mg/ml BSA (US sourced) and 0.05% sodium azide; *For IHC use only*	7 ml

[Bulk quote request](#)

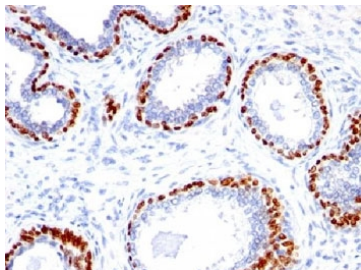
Species Reactivity	Human, Mouse, Rat
Format	Purified
Clonality	Polyclonal (rabbit origin)
Isotype	Rabbit IgG
Purity	Protein A affinity chromatography
Gene ID	8626
Localization	Nuclear
Applications	Western Blot : 1-2ug/ml Immunohistochemistry (FFPE) : 1-2ug/ml for 30 min at RT
Limitations	This p40 antibody is available for research use only.



IHC staining of FFPE lung squamous cell carcinoma with p40 antibody.



Western blot testing of HEK293 lysate using p40 antibody.



IHC testing of FFPE human prostate cancer with p40 antibody.

Description

p40 (p63 delta) is a marker recently determined to be highly specific for squamous basal cells in the immunohistochemistry (IHC) application. The current more routinely recommended marker, p63, appears to have less specificity compared to p40, especially on squamous cell tumors. The ability to differentiate between lung adenocarcinoma vs. squamous cell carcinoma is difficult and has bearing on the different therapeutic avenues for each subtype treatment. p40 antibody's ability to distinguish between the tumor types appears to be superior when compared to p63. The ability to utilize a p40 antibody probe as a squamous cell marker bolsters its use for future sub-classification of lung cancers, especially by immunohistochemical techniques.

Application Notes

The concentration stated for each application is a general starting point. Variations in protocols, secondaries and substrates may require the p40 antibody to be titrated up or down for optimal performance.

1. Staining of FFPE tissues requires boiling sections in 1mM EDTA, pH 9, for 10-20 min followed by cooling at RT for 20 min.
2. The prediluted format is supplied in a dropper bottle and is optimized for use in IHC. After epitope retrieval step (if required), drip mAb solution onto the tissue section and incubate at RT for 30 min.

Immunogen

Amino acids ENNAQTQFSEPQY (aa 5-17) of human p40 / p63 delta were used as the immunogen for this antibody.

Storage

Store the p40 antibody at 2-8oC (with azide) or aliquot and store at -20oC or colder (without azide).

Alternate Names

deltaNp63, p63 delta antibody

References (3)

