

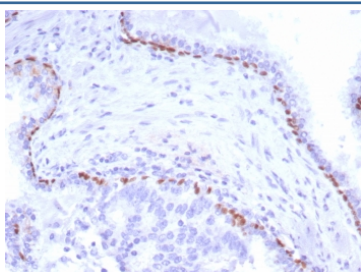
p40 Antibody / deltaNp63 [clone P40/8225R] (V5028)

Catalog No.	Formulation	Size
V5028-100UG	0.2 mg/ml in 1X PBS with 0.1 mg/ml BSA (US sourced), 0.05% sodium azide	100 ug
V5028-20UG	0.2 mg/ml in 1X PBS with 0.1 mg/ml BSA (US sourced), 0.05% sodium azide	20 ug
V5028SAF-100UG	1 mg/ml in 1X PBS; BSA free, sodium azide free	100 ug

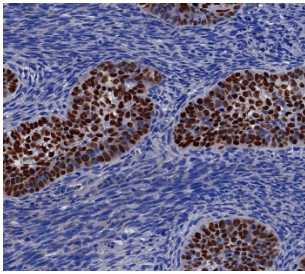
Recombinant **RABBIT MONOCLONAL**

[Bulk quote request](#)

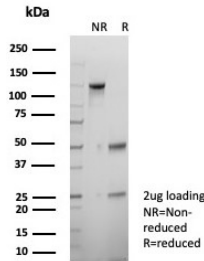
Availability	1-3 business days
Species Reactivity	Human
Format	Purified
Clonality	Recombinant Rabbit Monoclonal
Isotype	Rabbit IgG, kappa
Clone Name	P40/8225R
Purity	Protein A affinity
UniProt	Q9H3D4
Localization	Nucleus
Applications	Immunohistochemistry (FFPE) : 1-2ug/ml for 30 min at RT
Limitations	This p40 antibody is available for research use only.



IHC staining of FFPE human prostate carcinoma tissue with p40 antibody (clone P40/8225R). HIER: boil tissue sections in pH 9 10mM Tris with 1mM EDTA for 20 min and allow to cool before testing.



IHC staining of FFPE human lung carcinoma tissue with p40 antibody (clone P40/8225R). HIER: boil tissue sections in pH 9 10mM Tris with 1mM EDTA for 20 min and allow to cool before testing.



SDS-PAGE analysis of purified, BSA-free p40 antibody (clone P40/8225R) as confirmation of integrity and purity.

Description

p40 antibody detects the protein isoform encoded by the TP63 gene that contains the DNA-binding and oligomerization domains but lacks the N-terminal transactivation region. This isoform, also referred to as deltaNp63, plays a major role in squamous cell differentiation and is widely used as a diagnostic marker in pathology. Because p40 is expressed in basal cells of stratified epithelia and strongly in squamous carcinomas, p40 antibody has become an important reagent in cancer research and tumor diagnostics.

Structurally, p40 is a truncated variant of the p63 protein, part of the p53 family of transcription factors. While full-length p63 contributes to development and differentiation programs, the p40 isoform acts mainly as a dominant-negative regulator, competing for DNA-binding sites without activating transcription. This selective expression pattern makes it a highly specific marker for squamous differentiation compared with broader p63 antibodies that may cross-react with other isoforms.

The p40 antibody clone P40/8225R provides reproducible and specific detection of this isoform. Recombinant production ensures batch-to-batch consistency, which is critical for pathology workflows and long-term research. Peer-reviewed studies have documented the diagnostic accuracy of p40 detection in distinguishing squamous cell carcinoma from adenocarcinoma, particularly in lung cancer, where correct classification informs treatment strategies.

Research with clone P40/8225R has shown that p40 staining is more specific than p63 in identifying squamous lineage tumors, avoiding misinterpretation in cancers where both markers may be present. Its use has strengthened diagnostic algorithms in thoracic pathology, head and neck oncology, and urothelial cancer studies. Beyond diagnostics, p40 expression is investigated in developmental biology as a marker of basal epithelial progenitors, linking it to tissue regeneration and differentiation.

NSJ Bioreagents provides this p40 antibody to support oncology, pathology, and epithelial biology research. Alternate names include deltaNp63 antibody, TP63 isoform antibody, squamous differentiation marker antibody, basal cell transcription factor antibody, and p63 isoform delta antibody.

Application Notes

Optimal dilution of the p40 antibody should be determined by the researcher.

Immunogen

A recombinant partial protein sequence (within amino acids 1-200) from the human protein was used as the immunogen

for the p40 antibody.

Storage

Aliquot the p40 antibody and store frozen at -20oC or colder. Avoid repeated freeze-thaw cycles.