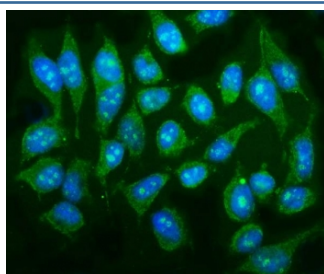


p38 gamma Antibody / MAPK12 (RQ6495)

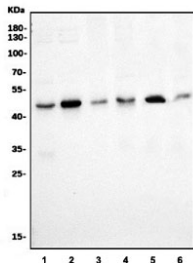
Catalog No.	Formulation	Size
RQ6495	0.5mg/ml if reconstituted with 0.2ml sterile DI water	100 ug

Bulk quote request

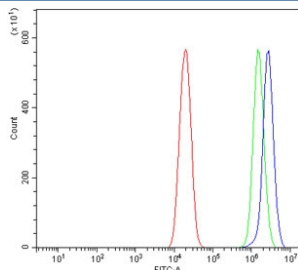
Availability	1-3 business days
Species Reactivity	Human, Mouse, Rat
Format	Antigen affinity purified
Host	Rabbit
Clonality	Polyclonal (rabbit origin)
Isotype	Rabbit IgG
Purity	Affinity purified
Buffer	Lyophilized from 1X PBS with 2% Trehalose
UniProt	P53778
Localization	Cytoplasmic, nuclear
Applications	Western Blot : 1-2ug/ml Immunofluorescence : 5ug/ml Flow Cytometry : 1-3ug/million cells Direct ELISA : 0.1-0.5ug/ml
Limitations	This p38 gamma antibody is available for research use only.



Immunofluorescent staining of FFPE human HeLa cells with p38 gamma antibody (green) and DAPI nuclear stain (blue). HIER: steam section in pH6 citrate buffer for 20 min.



Western blot testing of 1) human HeLa, 2) human HEK293, 3) monkey COS-7, 4) human K562, 5) rat skeletal muscle and 6) mouse skeletal muscle lysate with p38 gamma antibody. Expected molecular weight: 38-42 kDa.



Flow cytometry testing of human U-2 OS cells with p38 gamma antibody at 1ug/million cells (blocked with goat sera); Red=cells alone, Green=isotype control, Blue= p38 gamma antibody.

Description

Mitogen-activated protein kinase 12 (MAP kinase 12), also known as p38 gamma, extracellular signal-regulated kinase 6 (ERK6) or stress-activated protein kinase 3 (SAPK3), is an enzyme that in humans is encoded by the MAPK12 gene. Activation of members of the mitogen-activated protein kinase family is a major mechanism for transduction of extracellular signals. Stress-activated protein kinases are one subclass of MAP kinases. The protein encoded by this gene functions as a signal transducer during differentiation of myoblasts to myotubes.

Application Notes

Optimal dilution of the p38 gamma antibody should be determined by the researcher.

Immunogen

An E. coli-derived human protein (amino acids S229-L367) was used as the immunogen for the p38 gamma antibody.

Storage

After reconstitution, the p38 gamma antibody can be stored for up to one month at 4oC. For long-term, aliquot and store at -20oC. Avoid repeated freezing and thawing.