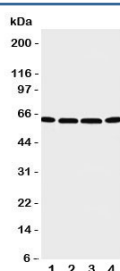


## P2X6 Antibody (R31243)

Catalog No.	Formulation	Size
R31243	0.5mg/ml if reconstituted with 0.2ml sterile DI water	100 ug

**Bulk quote request**

<b>Availability</b>	1-3 business days
<b>Species Reactivity</b>	Human
<b>Format</b>	Antigen affinity purified
<b>Clonality</b>	Polyclonal (rabbit origin)
<b>Isotype</b>	Rabbit IgG
<b>Purity</b>	Antigen affinity
<b>Buffer</b>	Lyophilized from 1X PBS with 2.5% BSA and 0.025% sodium azide/thimerosal
<b>UniProt</b>	O15547
<b>Applications</b>	Western Blot : 0.5-1ug/ml
<b>Limitations</b>	This P2X6 antibody is available for research use only.



Western blot testing of P2X6 antibody and Lane 1: U87; 2: 22RV1; 3: Jurkat; 4: HT1080 cell lysate. Expected/observed size 49~70KD depending on glycosylation level

## Description

Purinergic receptor P2X-Like 1, also known as P2X6, is a protein that in humans is encoded by the P2RX6 gene. The encoded protein is associated with VE-cadherin at the adherens junctions of human umbilical vein endothelial cells. This gene belongs to the family of P2X receptors. The gene was mapped to chromosome 22q11 by fluorescence in situ hybridization. The protein is a receptor for ATP that acts as a ligand-gated ion channel. It can mediate rapid and selective permeability to cations.

## Application Notes

The stated application concentrations are suggested starting amounts. Titration of the P2X6 antibody may be required

due to differences in protocols and secondary/substrate sensitivity.

## Immunogen

An amino acid sequence from the C-terminus of human P2X6 (VWRELALASQARLAELRRS) was used as the immunogen for this P2X6 antibody.

## Storage

After reconstitution, the P2X6 antibody can be stored for up to one month at 4°C. For long-term, aliquot and store at -20°C. Avoid repeated freezing and thawing.