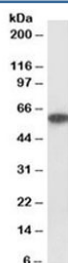


## P2rx4 Antibody (R34011)

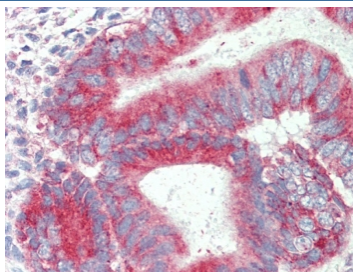
Catalog No.	Formulation	Size
R34011-100UG	0.5 mg/ml in 1X TBS, pH7.3, with 0.5% BSA (US sourced) and 0.02% sodium azide	100 ug

[Bulk quote request](#)

Availability	1-3 business days
Species Reactivity	Human
Format	Antigen affinity purified
Host	Goat
Clonality	Polyclonal (goat origin)
Isotype	Goat Ig
Purity	Antigen affinity
Gene ID	5025
Localization	Cytoplasmic, luminal membrane
Applications	Western Blot : 1-3ug/ml IHC (FFPE) : 5ug/ml ELISA (peptide) LOD : 1:16000
Limitations	This P2rx4 antibody is available for research use only.



Western blot testing of human kidney lysate with P2rx4 antibody at 1ug/ml. Expected molecular weight: 43-70 kDa depending on glycosylation level.



IHC testing of FFPE human uterus tissue with P2rx4 antibody at 5ug/ml. Required HIER: steamed antigen retrieval with pH6 citrate buffer; AP-staining.

## Description

Additional name(s) for this target protein: Purinergic receptor P2X, ligand-gated ion channel, 4

## Application Notes

Optimal dilution of the P2rx4 antibody should be determined by the researcher.

## Immunogen

Amino acids ETDSVVSSVTTKAK were used as the immunogen for this P2rx4 antibody.

## Storage

Aliquot and store the P2rx4 antibody at -20oC.