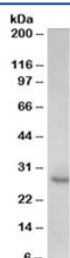


p27Kip1 Antibody (R34629)

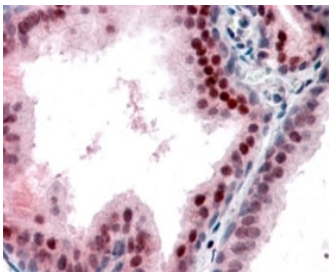
Catalog No.	Formulation	Size
R34629-100UG	0.5 mg/ml in 1X TBS, pH7.3, with 0.5% BSA (US sourced) and 0.02% sodium azide	100 ug

[Bulk quote request](#)

Availability	1-3 business days
Species Reactivity	Human
Predicted Reactivity	Cat, Cow, Dog, Mouse, Pig, Rat
Format	Antigen affinity purified
Host	Goat
Clonality	Polyclonal (goat origin)
Isotype	Goat Ig
Purity	Antigen affinity
Gene ID	1027
Applications	Western Blot : 0.1-0.3ug/ml Immunohistochemistry (FFPE) : 5-10ug/ml ELISA (peptide) LOD : 1:32000
Limitations	This p27Kip1 antibody is available for research use only.



Western blot testing of human prostate lysate with p27Kip1 antibody at 0.1ug/ml.
Predicted molecular weight ~27kDa.



IHC staining of FFPE human prostate with p27Kip1 antibody at 5ug/ml. HIER: steamed with pH6 citrate buffer, AP-staining.

Description

Additional name(s) for this target protein: Cyclin-dependent kinase inhibitor 1B (p27, Kip1), Cyclin-dependent kinase inhibitor 1B; CDKN1B

Application Notes

Optimal dilution of the p27Kip1 antibody should be determined by the researcher.

Immunogen

Amino acids KRPATDDSSSTQNK were used as the immunogen for this p27Kip1 antibody.

Storage

Aliquot and store the p27Kip1 antibody at -20oC.