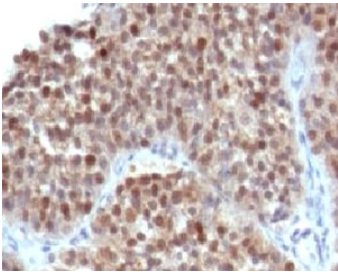


## p21 Antibody [clone WAF21-1] (V7072)

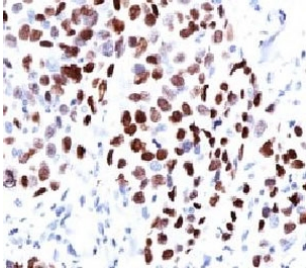
Catalog No.	Formulation	Size
V7072-100UG	0.2 mg/ml in 1X PBS with 0.1 mg/ml BSA (US sourced) and 0.05% sodium azide	100 ug
V7072-20UG	0.2 mg/ml in 1X PBS with 0.1 mg/ml BSA (US sourced) and 0.05% sodium azide	20 ug
V7072SAF-100UG	1 mg/ml in 1X PBS; BSA free, sodium azide free	100 ug
V7072IHC-7ML	Prediluted in 1X PBS with 0.1 mg/ml BSA (US sourced) and 0.05% sodium azide; *For IHC use only*	7 ml

[Bulk quote request](#)

<b>Availability</b>	1-3 business days
<b>Species Reactivity</b>	Human
<b>Format</b>	Purified
<b>Host</b>	Mouse
<b>Clonality</b>	Monoclonal (mouse origin)
<b>Isotype</b>	Mouse IgG2a, kappa
<b>Clone Name</b>	WAF21-1
<b>Purity</b>	Protein G affinity chromatography
<b>UniProt</b>	P38936
<b>Localization</b>	Nuclear
<b>Applications</b>	Immunofluorescence : 1-2ug/ml Western Blot : 1-2ug/ml Immunohistochemistry (FFPE) : 2-4ug/ml for 30 min at RT Prediluted IHC Only Format : incubate for 30 min at RT (1)
<b>Limitations</b>	This p21 antibody is available for research use only.



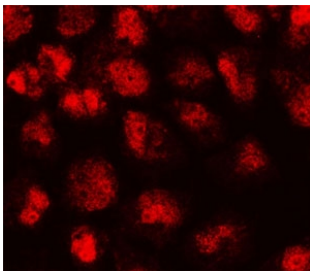
IHC testing of human bladder carcinoma and p21 antibody (WAF21-1). Staining of formalin-fixed tissues requires boiling tissue sections in pH 9 10mM Tris with 1mM EDTA for 10-20 min followed by cooling at RT for 20 min



IHC testing of human lung squamous cell carcinoma (SCC) and p21 antibody (WAF21-1). Staining of formalin-fixed tissues requires boiling tissue sections in pH 9 10mM Tris with 1mM EDTA for 10-20 min followed by cooling at RT for 20 min



Western blot testing of human HeLa cell lysate with p21 antibody (clone WAF21-1).



Immunofluorescent staining of human HeLa cells with p21 antibody (clone WAF21-1).

## Description

p21WAF1 is a specific inhibitor of cdk s and a tumor suppressor involved in the pathogenesis of a variety of malignancies. The expression of this gene acts as an inhibitor of the cell cycle during G1 phase and is tightly controlled by the tumor suppressor protein p53. Its expression is induced by the wild type, but not mutant, p53 suppressor protein. Normal cells generally display a rather intense nuclear p21 expression. Loss of p21 expression has been reported in many carcinomas (gastric carcinoma, non-small cell lung carcinoma, thyroid carcinoma).

## Application Notes

Optimal dilution of the p21 antibody to be determined by the researcher.

1. The prediluted format is supplied in a dropper bottle and is optimized for use in IHC. After epitope retrieval step (if required), drip mAb solution onto the tissue section and incubate at RT for 30 min.

## Immunogen

Recombinant full-length human protein was used as the immunogen for the p21 antibody. This antibody is not suitable for testing mouse and rat samples.

## Storage

Store the p21 antibody at 2-8oC (with azide) or aliquot and store at -20oC or colder (without azide).