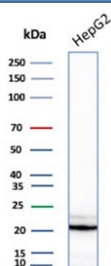


p21 Antibody / p21WAF1 [clone AC8] (V3802)

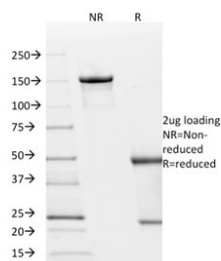
Catalog No.	Formulation	Size
V3802-100UG	0.2 mg/ml in 1X PBS with 0.1 mg/ml BSA (US sourced) and 0.05% sodium azide	100 ug
V3802-20UG	0.2 mg/ml in 1X PBS with 0.1 mg/ml BSA (US sourced) and 0.05% sodium azide	20 ug
V3802SAF-100UG	1 mg/ml in 1X PBS; BSA free, sodium azide free	100 ug

[Bulk quote request](#)

Availability	1-3 business days
Species Reactivity	Human
Format	Purified
Host	Mouse
Clonality	Monoclonal (mouse origin)
Isotype	Mouse IgG1, kappa
Clone Name	AC8
Purity	Protein G affinity chromatography
UniProt	P38936
Localization	Nuclear
Applications	Western Blot : 2-4ug/ml Immunofluorescence : 1-3ug/ml
Limitations	This p21 antibody is available for research use only.



Western blot testing of human HepG2 cell lysate with p21 antibody (clone AC8).



SDS-PAGE analysis of purified, BSA-free p21 antibody (clone AC8) as confirmation of integrity and purity.

Description

This MAb recognizes a 21kDa protein, identified as the p21WAF1 tumor suppressor protein. This MAb is highly specific to p21 and shows no cross-reaction with other closely related mitotic inhibitors. p21WAF1 is a specific inhibitor of cdk s and a tumor suppressor involved in the pathogenesis of a variety of malignancies. The expression of this gene acts as an inhibitor of the cell cycle during G1 phase and is tightly controlled by the tumor suppressor protein p53. Its expression is induced by the wild type, but not mutant, p53 suppressor protein. Normal cells generally display a rather intense nuclear p21 expression. Loss of p21 expression has been reported in many carcinomas (gastric carcinoma, non-small cell lung carcinoma, thyroid carcinoma).

Application Notes

Optimal dilution of the p21 antibody to be determined by the researcher.

Immunogen

Human recombinant protein was used as the immunogen for the p21 antibody.

Storage

Store the p21 antibody at 2-8oC (with azide) or aliquot and store at -20oC or colder (without azide).