

p21 Antibody [clone DCS-60.2] (V2431)

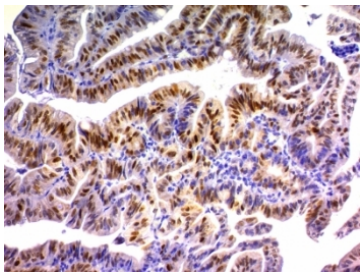
Catalog No.	Formulation	Size
V2431-100UG	0.2 mg/ml in 1X PBS with 0.1 mg/ml BSA (US sourced) and 0.05% sodium azide	100 ug
V2431-20UG	0.2 mg/ml in 1X PBS with 0.1 mg/ml BSA (US sourced) and 0.05% sodium azide	20 ug
V2431SAF-100UG	1 mg/ml in 1X PBS; BSA free, sodium azide free	100 ug
V2431IHC-7ML	Prediluted in 1X PBS with 0.1 mg/ml BSA (US sourced) and 0.05% sodium azide; *For IHC use only*	7 ml



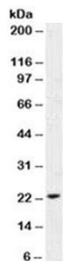
Citations (4)

[Bulk quote request](#)

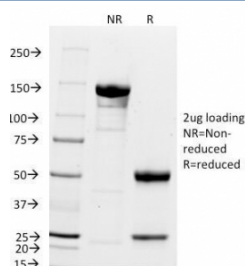
Availability	1-3 business days
Species Reactivity	Human
Format	Purified
Host	Mouse
Clonality	Monoclonal (mouse origin)
Isotype	Mouse IgG2a, kappa
Clone Name	DCS-60.2
Purity	Protein G affinity chromatography
UniProt	P38936
Localization	Nuclear
Applications	Flow Cytometry : 1-2ug/10 ⁶ cells Immunofluorescence : 1-2ug/ml Western Blot : 1-2ug/ml Immunohistochemistry (FFPE) : 2-4ug/ml for 30 min at RT
Limitations	This p21 antibody is available for research use only.



IHC analysis of formalin-fixed, paraffin-embedded human colon carcinoma stained with p21 antibody (clone DCS-60.2).



Western blot testing of human MCF7 cell lysate with p21 antibody (clone DCS-60.2).



SDS-PAGE Analysis of Purified, BSA-Free p21 Antibody (clone DCS-60.2). Confirmation of Integrity and Purity of the Antibody.

Description

This mAb recognizes a 21kDa protein, identified as the p21WAF1 tumor suppressor protein. This mAb is highly specific to p21 and shows no cross-reaction with other closely related mitotic inhibitors. p21WAF1 is a specific inhibitor of cdk s and a tumor suppressor involved in the pathogenesis of a variety of malignancies. The expression of this gene acts as an inhibitor of the cell cycle during G1 phase and is tightly controlled by the tumor suppressor protein p53. Its expression is induced by the wild type, but not mutant, p53 suppressor protein. Normal cells generally display a rather intense nuclear p21 expression. Loss of p21 expression has been reported in many carcinomas (gastric carcinoma, non-small cell lung carcinoma, thyroid carcinoma).

Application Notes

Optimal dilution of the p21 antibody to be determined by the researcher.

1. Staining of formalin-fixed tissues requires boiling tissue sections in pH 9 10mM Tris with 1mM EDTA for 10-20 min followed by cooling at RT for 20 min
2. The prediluted format is supplied in a dropper bottle and is optimized for use in IHC. After epitope retrieval step (if required), drip mAb solution onto the tissue section and incubate at RT for 30 min.

Immunogen

Human recombinant protein was used as the immunogen for the p21 antibody.

Storage

Store the p21 antibody at 2-8oC (with azide) or aliquot and store at -20oC or colder (without azide).

