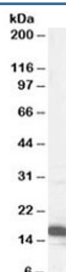


p16 Antibody (R34160)

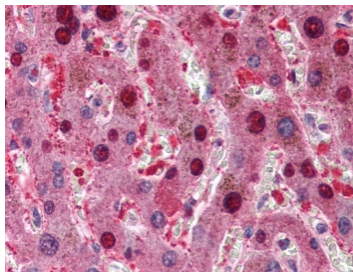
| Catalog No. | Formulation | Size |
|--------------|---|--------|
| R34160-100UG | 0.5 mg/ml in 1X TBS, pH7.3, with 0.5% BSA (US sourced) and 0.02% sodium azide | 100 ug |

[Bulk quote request](#)

| | |
|--------------------|---|
| Availability | 1-3 business days |
| Species Reactivity | Human |
| Format | Antigen affinity purified |
| Host | Goat |
| Clonality | Polyclonal (goat origin) |
| Isotype | Goat Ig |
| Purity | Antigen affinity |
| Gene ID | 1029 |
| Localization | Nuclear |
| Applications | Western Blot : 0.1-1ug/ml IHC (FFPE) : 5ug/ml ELISA (peptide) LOD : 1:32000 |
| Limitations | This p16 antibody is available for research use only. |



Western blot testing of HeLa lysate with p16 antibody at 1ug/ml. Predicted molecular weight ~16 kDa.



IHC testing of FFPE human liver tissue with p16 antibody at 5ug/ml. Required HIER: steamed antigen retrieval with pH6 citrate buffer; AP-staining.

Description

Additional name(s) for this target protein: Cyclin-dependent kinase inhibitor 2A, p16INK4a; CDKN2A

Application Notes

Optimal dilution of the p16 antibody should be determined by the researcher.

1. This p16 antibody will detect isoform p16INK4a and p16gamma.

Immunogen

Amino acids HARIDAAEGPSDIPD were used as the immunogen for this p16 antibody.

Storage

Aliquot and store the p16 antibody at -20oC.