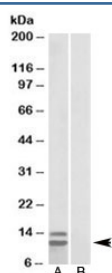


## p15 INK4b Antibody (isoform 2) (R35729)

Catalog No.	Formulation	Size
R35729-100UG	0.5 mg/ml in 1X TBS, pH7.3, with 0.5% BSA (US sourced) and 0.02% sodium azide	100 ug

[Bulk quote request](#)

Availability	1-3 business days
Species Reactivity	Human
Format	Antigen affinity purified
Clonality	Polyclonal (goat origin)
Isotype	Goat Ig
Purity	Antigen affinity
Gene ID	1030
Applications	Western Blot : 1-3ug/ml (1) ELISA (peptide) LOD : 1:128000
Limitations	This p15 INK4b antibody is available for research use only.



Western blot testing of human gastrointestinal cancer lysate and p15 INK4b antibody at 1ug/ml with [B] and without [A] immunizing peptide. Predicted/observed molecular weight: ~12kDa (isoform 2).

## Description

Additional name(s) for this target protein: CDKN2B, cyclin-dependent kinase inhibitor 2B

## Application Notes

Optimal dilution of the p15 INK4b antibody should be determined by the researcher.

1. This p15 INK4b antibody is specific to isoform 2 (~12kDa). The ~14kDa band can not be isoform 1. It is most likely represents a post-translational modification of isoform 2.

## Immunogen

Amino acids RQGARERGARP were used as the immunogen for this p15 INK4b antibody. This sequence is specific to isoform 2.

## Storage

Aliquot and store the p15 INK4b antibody at -20oC.