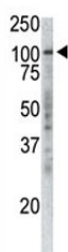


## p100 Antibody / TPX2 [clone 19AT738.292] (F40192)

Catalog No.	Formulation	Size
F40192-0.4ML	In 1X PBS, pH 7.4, with 0.09% sodium azide	0.4 ml
F40192-0.08ML	In 1X PBS, pH 7.4, with 0.09% sodium azide	0.08 ml

[Bulk quote request](#)

<b>Availability</b>	1-3 business days
<b>Species Reactivity</b>	Human, Mouse
<b>Format</b>	Purified
<b>Host</b>	Mouse
<b>Clonality</b>	Monoclonal (mouse origin)
<b>Isotype</b>	Mouse IgG1
<b>Clone Name</b>	19AT738.292
<b>Purity</b>	Purified
<b>UniProt</b>	Q9ULW0
<b>Applications</b>	Western Blot : 1:100-1:500
<b>Limitations</b>	This p100 antibody is available for research use only.



Western analysis of extracts from Jurkat cells using p100 antibody.

## Description

TPX2/p100 is a spindle assembly factor. Required for normal assembly of mitotic spindles. Required for normal assembly of microtubules during apoptosis. Required for chromatin and/or kinetochore dependent microtubule nucleation. Mediates AURKA localization to spindle microtubules. Activates AURKA by promoting its autophosphorylation at 'Thr-288' and protects this residue against dephosphorylation. [UniProt]

## Application Notes

Titration of the p100 antibody may be required due to differences in protocols and secondary/substrate sensitivity.

## Immunogen

A KLH conjugated synthetic peptide from the human protein was used as immunogen for this p100 antibody.

## Storage

Aliquot the p100 antibody and store frozen at -20oC or colder. Avoid repeated freeze-thaw cycles.