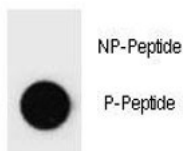


Phospho-PARP1 (pS373) Antibody (F48734)

Catalog No.	Formulation	Size
F48734-0.4ML	In 1X PBS, pH 7.4, with 0.09% sodium azide	0.4 ml
F48734-0.08ML	In 1X PBS, pH 7.4, with 0.09% sodium azide	0.08 ml

[Bulk quote request](#)

Availability	1-3 business days
Species Reactivity	Rat
Format	Antigen affinity purified
Host	Rabbit
Clonality	Polyclonal (rabbit origin)
Isotype	Rabbit Ig
Purity	Antigen affinity
UniProt	P27008
Applications	Dot Blot : 1:500
Limitations	This Phospho-PARP1 (pS373) Antibody is available for research use only.



Dot blot analysis of Phospho-PARP1 (pS373) Antibody. 50ng of phos-peptide or nonphos-peptide per dot were spotted.

Description

Phospho-PARP1 (pS373) Antibody specifically detects PARP1 phosphorylated at the serine 373 site. Catalyzes poly (ADP-ribose) protein modification; plays a role in DNA repair and genome stability [RGD].

Phosphorylation-dependent PARP1 signaling studies may also benefit from our [phospho-PARP1 \(Ser177\) antibody](#) page focused on DNA damage response and chromatin stress pathway regulation.

Application Notes

Titration of the Phospho-PARP1 (pS373) Antibody may be required due to differences in protocols and secondary/substrate sensitivity.

Immunogen

This Phospho-PARP1 (pS373) Antibody was produced from rabbits immunized with a KLH conjugated synthetic phosphopeptide corresponding to amino acid residues surrounding pS373 of rat PARP1.

Storage

Aliquot the Phospho-PARP1 (pS373) Antibody and store frozen at -20oC or colder. Avoid repeated freeze-thaw cycles.