

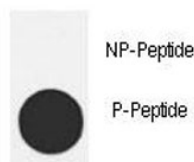
p-MDM2 Antibody (pT218) (F48546)

Catalog No.	Formulation	Size
F48546-0.4ML	In 1X PBS, pH 7.4, with 0.09% sodium azide	0.4 ml
F48546-0.08ML	In 1X PBS, pH 7.4, with 0.09% sodium azide	0.08 ml

[Bulk quote request](#)

Availability	1-3 business days
Species Reactivity	Human
Format	Antigen affinity purified
Host	Rabbit
Clonality	Polyclonal (rabbit origin)
Isotype	Rabbit Ig
Purity	Antigen affinity
UniProt	Q00987
Applications	Dot Blot : 1:500
Limitations	This p-MDM2 antibody is available for research use only.

Dot blot analysis of p-MDM2 antibody. 50ng of phos-peptide or nonphos-peptide per dot were spotted.



Description

MDM2 is a target of the transcription factor tumor protein p53. The encoded protein is a nuclear phosphoprotein that binds and inhibits transactivation by tumor protein p53, as part of an autoregulatory negative feedback loop. Overexpression of MDM2 can result in excessive inactivation of tumor protein p53, diminishing its tumor suppressor function. This protein has E3 ubiquitin ligase activity, which targets tumor protein p53 for proteasomal degradation. This protein also affects the cell cycle, apoptosis, and tumorigenesis through interactions with other proteins, including retinoblastoma 1 and ribosomal protein L5.

Application Notes

Titration of the p-MDM2 antibody may be required due to differences in protocols and secondary/substrate sensitivity.

Immunogen

This p-MDM2 antibody was produced from rabbits immunized with a KLH conjugated synthetic phosphopeptide corresponding to amino acid residues surrounding pT218 of human MDM2.

Storage

Aliquot the p-MDM2 antibody and store frozen at -20oC or colder. Avoid repeated freeze-thaw cycles.