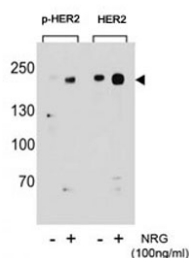


Phospho-ErbB2 (pS1151) Antibody / Regulatory Site (F48688)

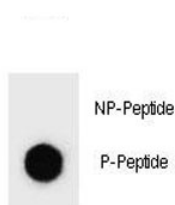
| Catalog No. | Formulation | Size |
|---------------|--|---------|
| F48688-0.4ML | In 1X PBS, pH 7.4, with 0.09% sodium azide | 0.4 ml |
| F48688-0.08ML | In 1X PBS, pH 7.4, with 0.09% sodium azide | 0.08 ml |

[Bulk quote request](#)

| | |
|---------------------------|--|
| Availability | 1-3 business days |
| Species Reactivity | Human |
| Format | Antigen affinity purified |
| Host | Rabbit |
| Clonality | Polyclonal (rabbit origin) |
| Isotype | Rabbit Ig |
| Purity | Antigen affinity |
| UniProt | P04626 |
| Applications | Dot Blot : 1:500 Western Blot : 1:1000 |
| Limitations | This Phospho-ErbB2 (pS1151) Antibody / Regulatory Site is available for research use only. |



Phospho-ErbB2 (pS1151) Antibody NRG-Stimulated WB. Western blot analysis of human T47D cell lysates treated with or without neuregulin (NRG, 100 ng/ml) using Phospho-ErbB2 (pS1151) Antibody detects a band at approximately 185 kDa in stimulated samples, consistent with the predicted molecular weight of phosphorylated ErbB2 / HER2, while untreated samples show reduced signal; parallel detection with a nonphospho ErbB2 antibody confirms total receptor expression across conditions, supporting phosphorylation-dependent regulatory signaling at Ser1151.



Phospho-ErbB2 (pS1151) Antibody Dot Blot Specificity. Dot blot analysis of Phospho-ErbB2 (pS1151) Antibody demonstrates strong signal for the phosphorylated peptide and no detectable binding to the corresponding non-phosphorylated peptide, confirming phospho-specific recognition of ErbB2 / HER2 at Ser1151. Approximately 50 ng of phospho-peptide or non-phospho peptide was applied per spot.

Description

ErbB2 receptor tyrosine kinase 2 (ERBB2), also known as HER2, is a transmembrane receptor that regulates cell proliferation, survival, and differentiation through activation of intracellular signaling pathways. Phospho-ErbB2 (pS1151) antibody, also referred to as phospho-HER2 antibody and phospho-ERBB2 antibody in the literature, detects phosphorylation at serine 1151, a regulatory residue located within the intracellular domain of HER2.

Phosphorylation at serine residues contributes to modulation of receptor signaling and complements tyrosine phosphorylation events that drive pathway activation. While tyrosine sites such as Y1248, Y1221, and Y1222 are associated with activation and propagation of signaling, serine phosphorylation plays a role in fine-tuning receptor function and regulating signaling output.

Phosphorylation at S1151 reflects regulatory activity within the HER2 signaling network, where multiple modifications coordinate receptor behavior and downstream pathway engagement. This may include influencing receptor conformation, stability, or interactions with regulatory proteins under varying cellular conditions.

HER2 signaling is a key driver of tumor biology, particularly in cancers characterized by ERBB2 amplification such as breast carcinoma. In these contexts, regulatory phosphorylation events contribute to how signaling is controlled and maintained. Detection of phosphorylation at S1151 provides insight into these modulatory processes within the broader signaling framework.

S1151 functions alongside other phosphorylation sites including Y1112, Y1139, Y1221, Y1222, and Y1248, which together regulate HER2 signaling from initiation through sustained activation. Analysis of serine phosphorylation complements detection of these residues and supports a more comprehensive understanding of HER2 signaling dynamics.

Phospho-specific detection of ERBB2 at S1151 enables investigation of regulatory mechanisms that influence receptor activity and signaling behavior in both normal and disease contexts.

For detection of activated HER2 phosphorylation, see our [HER2 phospho antibody \(pY1248\)](#).

Application Notes

Titration of the Phospho-ErbB2 (pS1151) Antibody / Regulatory Site may be required due to differences in protocols and secondary/substrate sensitivity.

Immunogen

This Phospho-ErbB2 (pS1151) Antibody was produced from rabbits immunized with a KLH conjugated synthetic phosphopeptide corresponding to amino acid residues surrounding pS1151 of human HER2/ERBB2.

Storage

Aliquot the Phospho-ErbB2 (pS1151) Antibody and store frozen at -20oC or colder. Avoid repeated freeze-thaw cycles.

Alternate Names

Phospho-ErbB2 (pS1151) antibody, phospho-HER2 Ser1151 antibody, ERBB2 pS1151 antibody, HER2 serine phosphorylation antibody

