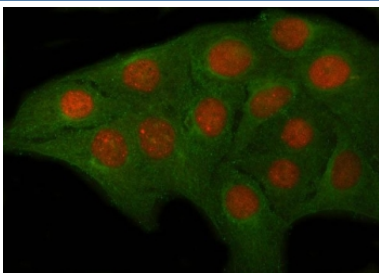


OVOL2 Antibody / Ovo-like 2 (RQ8063)

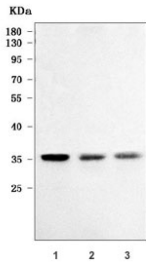
Catalog No.	Formulation	Size
RQ8063	0.5mg/ml if reconstituted with 0.2ml sterile DI water	100 ug

Bulk quote request

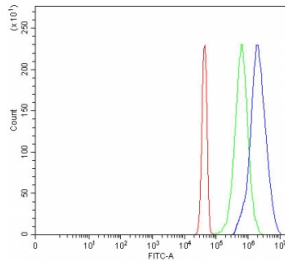
Availability	1-3 business days
Species Reactivity	Human
Format	Antigen affinity purified
Host	Rabbit
Clonality	Polyclonal (rabbit origin)
Isotype	Rabbit IgG
Purity	Antigen affinity purified
Buffer	Lyophilized from 1X PBS with 2% Trehalose
UniProt	Q9BRP0
Localization	Nuclear
Applications	Western Blot : 0.5-1ug/ml Immunofluorescence : 5ug/ml Flow Cytometry : 1-3ug/million cells Direct ELISA : 0.1-0.5ug/ml
Limitations	This OVOL2 antibody is available for research use only.



Immunofluorescent staining of FFPE human U-2 OS cells with OVOL2 antibody (red) and Alpha Tubulin mAb (green). HIER: steam section in pH6 citrate buffer for 20 min.



Western blot testing of human 1) A431, 2) RT4 and 3) HaCaT cell lysate with OVOL2 antibody. Predicted molecular weight ~30 kDa.



Flow cytometry testing of fixed and permeabilized human JK cells with OVOL2 antibody at 1ug/million cells (blocked with goat sera); Red=cells alone, Green=isotype control, Blue= OVOL2 antibody.

Description

This gene encodes a member of the evolutionarily conserved ovo-like protein family. Mammalian members of this family contain a single zinc finger domain composed of a tetrad of C2H2 zinc fingers with variable N- and C-terminal extensions that contain intrinsically disordered domains. Members of this family are involved in epithelial development and differentiation. Knockout of this gene in mouse results in early embryonic lethality with phenotypes that include neurectoderm expansion, impaired vascularization, and heart anomalies. In humans, allelic variants of this gene have been associated with posterior polymorphous corneal dystrophy.

Application Notes

Optimal dilution of the OVOL2 antibody should be determined by the researcher.

Immunogen

E. coli-derived recombinant human protein (amino acids M1-E271) was used as the immunogen for the OVOL2 antibody.

Storage

After reconstitution, the OVOL2 antibody can be stored for up to one month at 4oC. For long-term, aliquot and store at -20oC. Avoid repeated freezing and thawing.