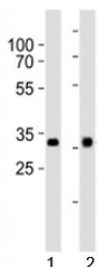


## OTX2 Antibody (F52800)

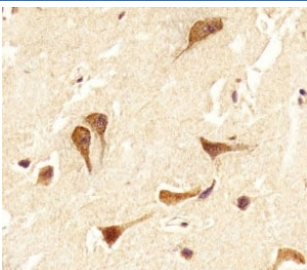
Catalog No.	Formulation	Size
F52800-0.4ML	In 1X PBS, pH 7.4, with 0.09% sodium azide	0.4 ml
F52800-0.08ML	In 1X PBS, pH 7.4, with 0.09% sodium azide	0.08 ml

[Bulk quote request](#)

<b>Availability</b>	1-3 business days
<b>Species Reactivity</b>	Human
<b>Predicted Reactivity</b>	Mouse, Rat
<b>Format</b>	Antigen affinity purified
<b>Host</b>	Rabbit
<b>Clonality</b>	Polyclonal (rabbit origin)
<b>Isotype</b>	Rabbit Ig
<b>Purity</b>	Antigen affinity
<b>UniProt</b>	P32243
<b>Applications</b>	IHC (Paraffin) : 1:25 Western Blot : 1:1000
<b>Limitations</b>	This OTX2 antibody is available for research use only.



Western blot analysis of lysate from 1) HepG2 and 2) Y79 cell line using OTX2 antibody at 1:1000.



IHC analysis of FFPE human brain section using OTX2 antibody; Ab was diluted at 1:25.

## Description

Probably plays a role in the development of the brain and the sense organs. Can bind to the BCD target sequence (BTS): 5'-TCTAATCCC-3'.

## Application Notes

Titration of the OTX2 antibody may be required due to differences in protocols and secondary/substrate sensitivity.

## Immunogen

This OTX2 antibody was produced from a rabbit immunized with a KLH conjugated synthetic peptide between 201-226 amino acids from the C-terminal region of human OTX2.

## Storage

Aliquot the OTX2 antibody and store frozen at -20oC or colder. Avoid repeated freeze-thaw cycles.