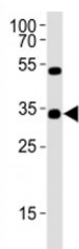


OTX2 Antibody (F52791)

Catalog No.	Formulation	Size
F52791-0.4ML	In 1X PBS, pH 7.4, with 0.09% sodium azide	0.4 ml
F52791-0.08ML	In 1X PBS, pH 7.4, with 0.09% sodium azide	0.08 ml

[Bulk quote request](#)

Availability	1-3 business days
Species Reactivity	Human
Format	Antigen affinity purified
Host	Rabbit
Clonality	Polyclonal (rabbit origin)
Isotype	Rabbit Ig
Purity	Antigen affinity
UniProt	P32243
Applications	Western Blot : 1:1000
Limitations	This OTX2 antibody is available for research use only.



Western blot analysis of lysate from Y79 cell line using OTX2 antibody at 1:1000.

Description

Probably plays a role in the development of the brain and the sense organs. Can bind to the BCD target sequence (BTS): 5'-TCTAATCCC-3'.

Application Notes

Titration of the OTX2 antibody may be required due to differences in protocols and secondary/substrate sensitivity.

Immunogen

This OTX2 antibody was produced from a rabbit immunized with a KLH conjugated synthetic peptide between 102-135 amino acids from the Central region of human OTX2.

Storage

Aliquot the OTX2 antibody and store frozen at -20oC or colder. Avoid repeated freeze-thaw cycles.