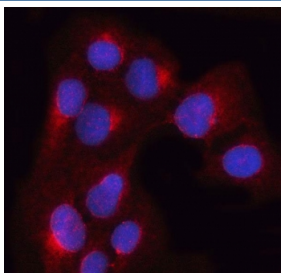


OSTF1 Antibody / Osteoclast-stimulating factor 1 (RQ7959)

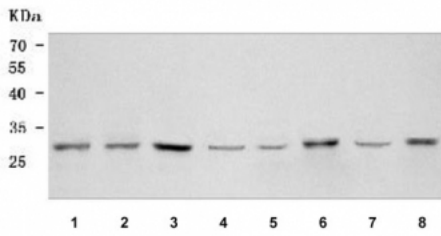
Catalog No.	Formulation	Size
RQ7959	0.5mg/ml if reconstituted with 0.2ml sterile DI water	100 ug

Bulk quote request

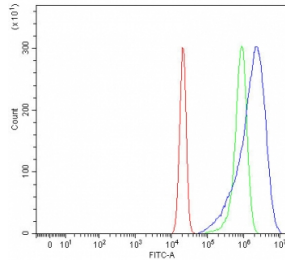
Availability	1-3 business days
Species Reactivity	Human, Mouse, Rat
Format	Antigen affinity purified
Host	Rabbit
Clonality	Polyclonal (rabbit origin)
Isotype	Rabbit IgG
Purity	Antigen affinity purified
Buffer	Lyophilized from 1X PBS with 2% Trehalose
UniProt	Q92882
Localization	Cytoplasmic
Applications	Western Blot : 0.5-1ug/ml Immunofluorescence (FFPE) : 5ug/ml Flow Cytometry : 1-3ug/million cells Direct ELISA : 0.1-0.5ug/ml
Limitations	This OSTF1 antibody is available for research use only.



Immunofluorescent staining of FFPE human U-2 OS cells with OSTF1 antibody (red) and DAPI nuclear stain (blue). HIER: steam section in pH6 citrate buffer for 20 min.



Western blot testing of 1) human HeLa, 2) human HepG2, 3) human MCF7, 4) human placenta, 5) rat liver, 6) rat PC-12, 7) mouse liver and 8) mouse C2C12 cell lysate with OSTF1 antibody. Predicted molecular weight ~24 kDa, commonly observed at 24-28 kDa.



Flow cytometry testing of human U-2 OS cells with OSTF1 antibody at 1 ug/million cells (blocked with goat sera); Red=cells alone, Green=isotype control, Blue= OSTF1 antibody.

Description

Osteoclast-stimulating factor 1 is a protein that in humans is encoded by the OSTF1 gene. Osteoclast-stimulating factor-1 is an intracellular protein produced by osteoclasts that indirectly induces osteoclast formation and bone resorption.

Application Notes

Optimal dilution of the OSTF1 antibody should be determined by the researcher.

Immunogen

E. coli-derived recombinant human protein (amino acids R57-K191) was used as the immunogen for the OSTF1 antibody.

Storage

After reconstitution, the OSTF1 antibody can be stored for up to one month at 4oC. For long-term, aliquot and store at -20oC. Avoid repeated freezing and thawing.