

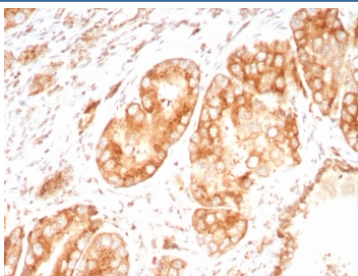
Osteopontin Antibody / Uropontin / SPP1 [clone OSP/8693R] (V5054)

Catalog No.	Formulation	Size
V5054-100UG	0.2 mg/ml in 1X PBS with 0.1 mg/ml BSA (US sourced), 0.05% sodium azide	100 ug
V5054-20UG	0.2 mg/ml in 1X PBS with 0.1 mg/ml BSA (US sourced), 0.05% sodium azide	20 ug
V5054SAF-100UG	1 mg/ml in 1X PBS; BSA free, sodium azide free	100 ug

Recombinant **RABBIT MONOCLONAL**

[Bulk quote request](#)

Availability	1-3 business days
Species Reactivity	Human
Format	Purified
Host	Mouse
Clonality	Recombinant Rabbit Monoclonal
Isotype	Mouse IgG1, kappa
Clone Name	OSP/8693R
Purity	Protein A/G affinity
UniProt	P10451
Localization	Secreted
Applications	Immunohistochemistry (FFPE) : 1-2ug/ml for 30 min at RT
Limitations	This Osteopontin antibody is available for research use only.



IHC staining of FFPE human brain tissue with Osteopontin antibody (clone OSP/8693R).
HIER: boil tissue sections in pH 9 10mM Tris with 1mM EDTA for 20 min and allow to cool before testing.

Description

Osteopontin is a bone matrix protein and a cytokine secreted by activated T cells. Osteopontin (OPN, also designated bone sialoprotein 1, urinary stone protein, spp-1, nephropontin, uropontin) is an extracellular matrix cell adhesion

phosphoglycoprotein. OPN is deposited into unmineralized matrix prior to calcification leading to localization at various tissue interfaces including cement lines, lamina limitans, and between collagen fibrils of fully matured hard tissues. While OPN is a major product of osteoblasts, it is also synthesized by brain and kidney cells. OPNs isolated from or secreted by various tissues have molecular weights due to post-translational modifications. OPN functions as a substrate for transglutaminase and is involved in cell adhesion, chemoattraction and immunomodulation.

Application Notes

Optimal dilution of the Osteopontin antibody should be determined by the researcher.

Immunogen

Recombinant full-length rat protein was used as the immunogen for the Osteopontin antibody.

Storage

Aliquot the Osteopontin antibody and store frozen at -20oC or colder. Avoid repeated freeze-thaw cycles.