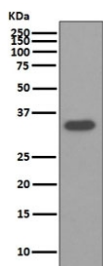


## Osteopontin Antibody / OPN / SPP1 [clone CEO-19] (RQ5325)

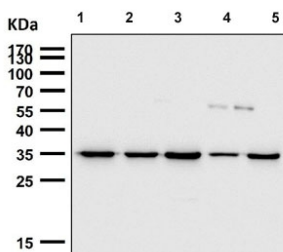
Catalog No.	Formulation	Size
RQ5325	Antibody in PBS with 0.02% sodium azide, 50% glycerol and 0.4-0.5mg/ml BSA	100 ul

[Bulk quote request](#)

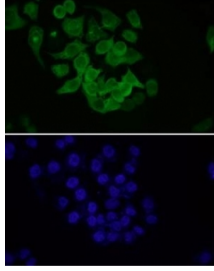
<b>Availability</b>	1-2 weeks
<b>Species Reactivity</b>	Human
<b>Format</b>	Purified
<b>Host</b>	Rabbit
<b>Clonality</b>	Rabbit Monoclonal
<b>Isotype</b>	Rabbit IgG
<b>Clone Name</b>	CEO-19
<b>Purity</b>	Affinity purified
<b>UniProt</b>	P10451
<b>Applications</b>	Western Blot : 1:500-1:2000 Immunofluorescence : 1:50-1:200
<b>Limitations</b>	This Osteopontin antibody is available for research use only.



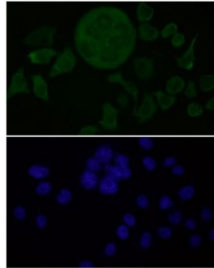
Western blot testing of human HepG2 cell lysate with Osteopontin antibody. Predicted molecular weight: 35-65 kDa depending on degree of glycosylation.



Western blot testing of human 1) HepG2, 2) SW-480, 3) SK-O-V3, 4) MCF7 and 5) HeLa cell lysate with Osteopontin antibody. Predicted molecular weight: 35-65 kDa depending on degree of glycosylation.



Immunofluorescent staining of FFPE human HeLa cells with Osteopontin antibody (1:50 dilution, green) and DAPI nuclear stain (blue). HIER: steam section in pH6 citrate buffer for 20 min.



Immunofluorescent staining of FFPE human HeLa cells with Osteopontin antibody (1:150 dilution, green) and DAPI nuclear stain (blue). HIER: steam section in pH6 citrate buffer for 20 min.

## Description

The protein encoded by the SPP1 gene is involved in the attachment of osteoclasts to the mineralized bone matrix. The encoded protein is secreted and binds hydroxyapatite with high affinity. The osteoclast vitronectin receptor is found in the cell membrane and may be involved in the binding to this protein. This protein is also a cytokine that upregulates expression of interferon-gamma and interleukin-12. Several transcript variants encoding different isoforms have been found for this gene. [RefSeq]

## Application Notes

Optimal dilution of the Osteopontin antibody should be determined by the researcher.

## Immunogen

A synthetic peptide specific to human Osteopontin / SPP1 was used as the immunogen for the Osteopontin antibody.

## Storage

Store the Osteopontin antibody at -20°C.